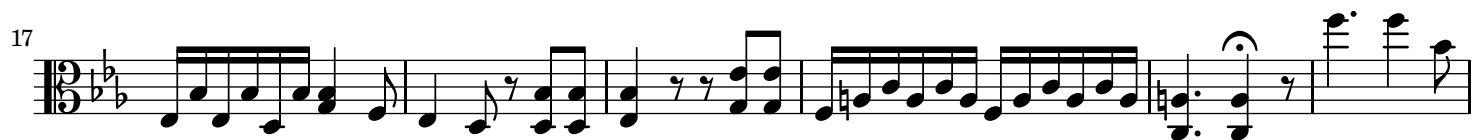


# Sei Duetti a Due Viole

Alessandro Rolla (1757 - 1841)

Duet 2 - Andante sostenuto

(Torinesi manuscript, BI uncatalogued)



48



54



60



64



69



75



80



86



92



96





41



46

49

52

57

The image displays five staves of musical notation in bass clef with a key signature of two flats (B-flat and E-flat). The notation includes various musical symbols such as eighth notes, quarter notes, half notes, and rests, often grouped with beams and slurs. Measure numbers 41, 46, 49, 52, and 57 are positioned at the beginning of their respective staves.