

Konzert für Klarinette in A dur

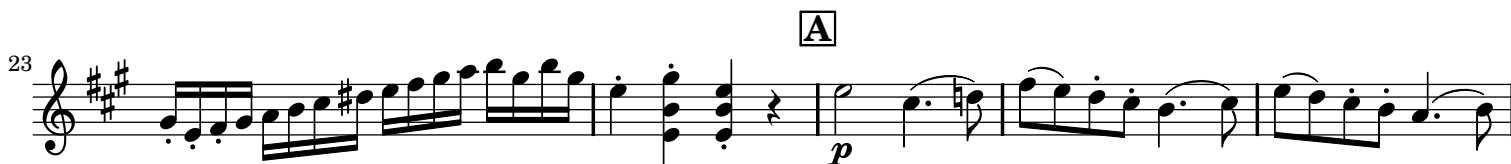
K.622

W.A. MOZART

Violino 2

I

Allegro



38 *p* *tr*

43 *f* *tr* **B**

48 *p*

55 *f* *p* Solo

62 *tr*

71 **C** Tutti *f* *p* Solo

79 *f* *p* 3

93 *tr* *tr* *f* **D**

100 Solo *p*

108 1

118 **E** 1 4 *p*

133 *tr*

138 *tr*

146

153 **Tutti** *f*

159

163 *p*

170 *f* **Solo** *p*

176

184

192 **F** **Tutti** *f* **Solo** *p* 3

204

212 **G**

219 *f* *p* **Tutti** *f*

228 *p* *f*

234 *p*

239 *f*

245 *tr* **Solo** *p*

251 *tr* *~*

260

H **Tutti** *f* *p* **Solo**

278 *f* *tr* *tr* **I** Tutti

287 Solo *p*

296

305

313 **K** *p*

323 *tr* *tr* *tr* *tr* *tr*

329 *tr* *tr*

338 Tutti *f*

346

352 *p* *f*

II

Adagio

Musical score for Violino 2, Adagio, starting at measure 6. The score is written in treble clef with a key signature of one sharp (F#) and a 3/4 time signature. The tempo is marked Adagio.

The score is divided into measures, with measure numbers 6, 10, 20, 31, 43, 55, 66, 76, and 86 indicated. The dynamics range from *p* (piano) to *f* (forte), with markings for *pp* (pianissimo), *mf* (mezzo-forte), and *meno p* (meno piano).

The score includes various musical markings:

- 6**: *p* (piano), *f* (forte), **Tutti**
- 10**: *p* (piano), **Solo**
- 20**: *f* (forte), **Tutti**
- 31**: *p* (piano), **Solo**
- 43**: *f* (forte), **L** (Lento)
- 55**: *p* (piano), *f* (forte), *pp* (pianissimo), **(Cad.)** (Cadenza)
- 66**: *f* (forte)
- 76**: *p* (piano), *pp* (pianissimo), **M** (Moderato), **Solo**
- 86**: *meno p* (meno piano), *pp* (pianissimo), *mf* (mezzo-forte), *p* (piano), *pp* (pianissimo)

The score concludes with a double bar line at measure 86.

III

Rondo - Allegro

Tutti

p

9 *f* *p* *f* *p* **Solo** *p*

18

N

28 **Tutti** 1 **Solo** *p*

39 **Tutti** *f* **Solo** *p*

47 **Tutti** *f* **Solo** *p*

58

O

69 **Tutti** **Solo** *p*

80

P

90 *sf* 1

101 *sfp*

108

116 *Tutti*
f

124

131 *Solo*

138 *p*

146 1

154 *f* *p*

162

169

177

Q

184 **R**

192

200

209 **4** *p*

220 **S** **1** *p*

229 *sfp* *sfp*

238 *p*

247 *Tutti* *p*

255 *f* *p* *f* *p*

262 *Solo* *p*

270 **T** *Tutti* **1**

279 *Solo*
p

286 *Tutti*
f *Solo*
p

292 *Tutti*
f

299 *Solo*
p

306 *f* *p* *f* *p*

313

319

325

332

339 *Tutti*
f

347