

Quintet KV. 581

for Clarinet, 2 violins, viola and cello

W. A. Mozart (1756-1791)

Allegro.



80

88

93

99

108

115

125

136

136

fp

142

142-148: Musical staff in treble clef, key of D major (two sharps). It begins with a melodic line starting on G4, moving up stepwise to A4, then a half note rest, followed by a half note G4, a half note F#4, and a half note E4. The next measure has a half note D4, a half note C#4, and a half note B3. The final measure has a half note A3, a half note G3, and a half note F#3. Dynamics: *fp* (first measure), *fp* (second measure), *f* (third measure), *p* (fourth measure).

149

149-155: Musical staff in treble clef, key of D major. It begins with a melodic line starting on G4, moving up stepwise to A4, then a half note rest, followed by a half note G4, a half note F#4, and a half note E4. The next measure has a half note D4, a half note C#4, and a half note B3. The final measure has a half note A3, a half note G3, and a half note F#3. Dynamics: *pp* (last measure).

156

156-162: Musical staff in treble clef, key of D major. It begins with a melodic line starting on G4, moving up stepwise to A4, then a half note rest, followed by a half note G4, a half note F#4, and a half note E4. The next measure has a half note D4, a half note C#4, and a half note B3. The final measure has a half note A3, a half note G3, and a half note F#3.

163

163-168: Musical staff in treble clef, key of D major. It begins with a melodic line starting on G4, moving up stepwise to A4, then a half note rest, followed by a half note G4, a half note F#4, and a half note E4. The next measure has a half note D4, a half note C#4, and a half note B3. The final measure has a half note A3, a half note G3, and a half note F#3.

169

169-175: Musical staff in treble clef, key of D major. It begins with a melodic line starting on G4, moving up stepwise to A4, then a half note rest, followed by a half note G4, a half note F#4, and a half note E4. The next measure has a half note D4, a half note C#4, and a half note B3. The final measure has a half note A3, a half note G3, and a half note F#3.

176

176-182: Musical staff in treble clef, key of D major. It begins with a melodic line starting on G4, moving up stepwise to A4, then a half note rest, followed by a half note G4, a half note F#4, and a half note E4. The next measure has a half note D4, a half note C#4, and a half note B3. The final measure has a half note A3, a half note G3, and a half note F#3.

183

183-189: Musical staff in treble clef, key of D major. It begins with a melodic line starting on G4, moving up stepwise to A4, then a half note rest, followed by a half note G4, a half note F#4, and a half note E4. The next measure has a half note D4, a half note C#4, and a half note B3. The final measure has a half note A3, a half note G3, and a half note F#3. Dynamics: *fp* (first measure), *fp* (second measure).

190

190-195: Musical staff in treble clef, key of D major. It begins with a melodic line starting on G4, moving up stepwise to A4, then a half note rest, followed by a half note G4, a half note F#4, and a half note E4. The next measure has a half note D4, a half note C#4, and a half note B3. The final measure has a half note A3, a half note G3, and a half note F#3. Dynamics: *p* (first measure), *f* (second measure).

Larghetto.

Violino I.

Violino I. Musical staff in treble clef, key of D major, 3/4 time. It begins with a melodic line starting on G4, moving up stepwise to A4, then a half note rest, followed by a half note G4, a half note F#4, and a half note E4. The next measure has a half note D4, a half note C#4, and a half note B3. The final measure has a half note A3, a half note G3, and a half note F#3. Dynamics: *p con sordino*.

8

8-13: Musical staff in treble clef, key of D major. It begins with a melodic line starting on G4, moving up stepwise to A4, then a half note rest, followed by a half note G4, a half note F#4, and a half note E4. The next measure has a half note D4, a half note C#4, and a half note B3. The final measure has a half note A3, a half note G3, and a half note F#3.

16



dolce

24



30



35



39



48



p

57



64



dolce

71



77

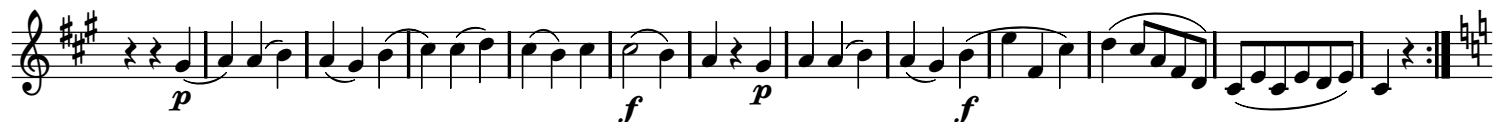


81



Menuetto.

20

**Trio I.**

41



49



58



66

**M.D.C.****Trio II.**

84



92



102



113



Allegretto con Variationi.

Violino I.



6



12



17

Var. I



24



28



33

Var. II



38



49 **Var. III**

56

60

65 **Var. IV**

70

73

76

80

85 **Adagio.**

85 **Adagio.** *tr*



p

89



93



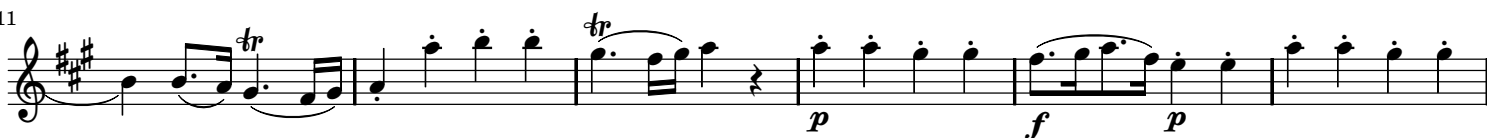
97



101

106 **Allegro.**

111



117



124



130



136

