

String Quartet KV. 465 (nr. 19) "Dissonances"

for 2 violins, viola and cello

Violino II.

W. A. Mozart (1756-1791)

Adagio.

9

17

24

29

36

41

48

52

57

64

70

p *cresc.* *f* *p* *cresc.* *f*

p *cresc.* *f*

p *sf* *p* *sf* *p* *fp*

p *sf* *p* *sf* *p*

f *p* *cresc.*

f *p* *f* *p* *f*

f *p* *f* *p* *f*

p *f* *p* *f* *p* *f*

p *cresc.* *f*

Violino II.

2

75

p

3

80

p

f

87

91

p

97

cresc.

102

f

2

p

110

116

f

122

p

f

127

p

tr

p

tr

132

f

p

tr

138

p

tr

143 *f* *p*

149 *p* *f* *p*

155 *p*

161 *f*

168 *p* *sf* *p* *sf* *p* *f*

173 *p* *f* *p*

178 *f* *p*

184 *f*

190 *p* *cresc.* *f*

195 *p* *f* *p*

201 *f*

208

Violino II.

4

211

p

217

cresc.

222

f *p* *p* 2

230

cresc. *f*

235

240

p *pp*

Andante cantabile.

p *cresc.* *f* *p* *tr*

7

cresc. *f* *p* *p*

14

cresc.

22

f *p* *pp*

29

cresc. *f* *p* *f*

36

p *cresc.* *p* *cresc.* *f*

44 *p* *cresc.* *f* *p*

51 *cresc.* *f* *p* *p*

57 *f* *p* *f* *p* *cresc.*

66 *f* *p* *cresc.* *f*

72 *p* *pp* *cresc.*

80 *f* *p* *p* *fp* *pp*

88 *cresc.* *f* *p* *sf* *p* *sf*

96 *p* *fp* *f* *p* *cresc.* *p* *p*

102 *cresc.*

108 *pp*

Minuetto.

8 *f* *f* *p*

6 Violino II.

Violino II.

6

23

32

39

46

54

61

67

73

79

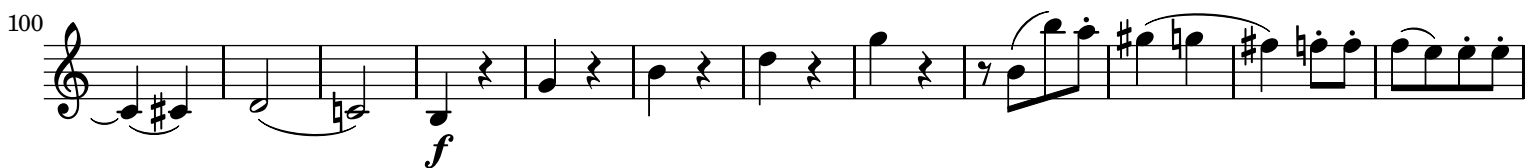
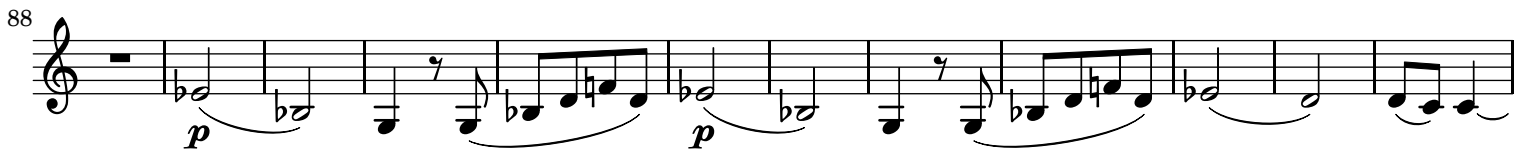
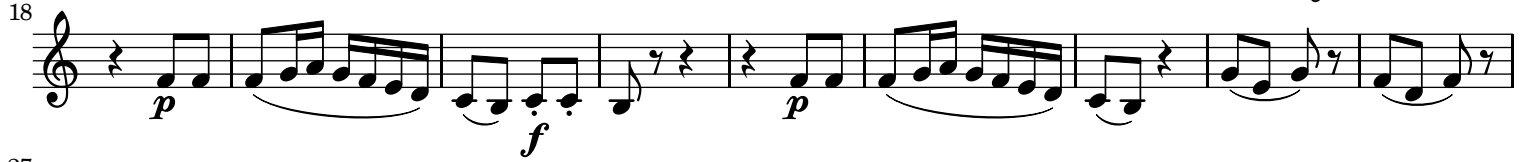
85

91

97

M.D.C.


Allegro.




132  *p*

142  *cresc.* *f*

151  *p*


161  *f*


170 

179  *p*


189 

199  *p*

209  *f* *p*

218  *f* *p* *cresc.*

227  *f* *p* *f*

236 

247  *p*

258 

268 

279 

289 

301 

311 

320 

331 

341 

352 

363 

374 

Violino II.

10
384

392

402

409

f *p* *cresc.* *f*

p *f* *p*

cresc. *f* *p*

f

Detailed description: This image shows a page of musical notation for Violino II, spanning measures 384 to 409. The notation is written on four staves. The first staff (measures 384-391) begins with a treble clef and a key signature of one sharp (F#). It contains eighth-note patterns, a half note, and a quarter note, with dynamics *f*, *p*, *cresc.*, and *f*. The second staff (measures 392-401) continues the pattern with dynamics *p*, *f*, and *p*. The third staff (measures 402-408) features a *cresc.* marking followed by *f* and *p*. The fourth staff (measure 409) ends with a *f* dynamic and a double bar line.