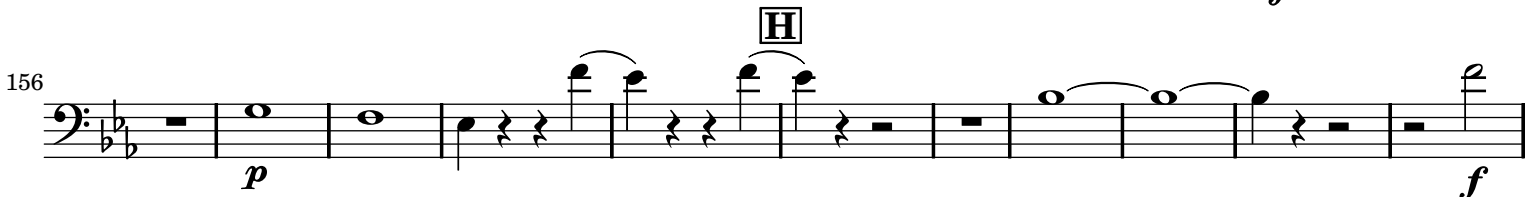
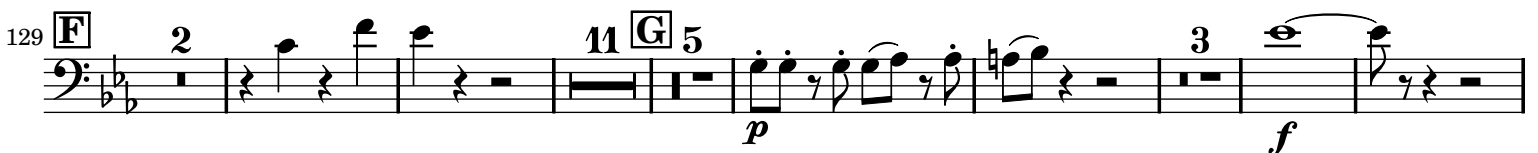
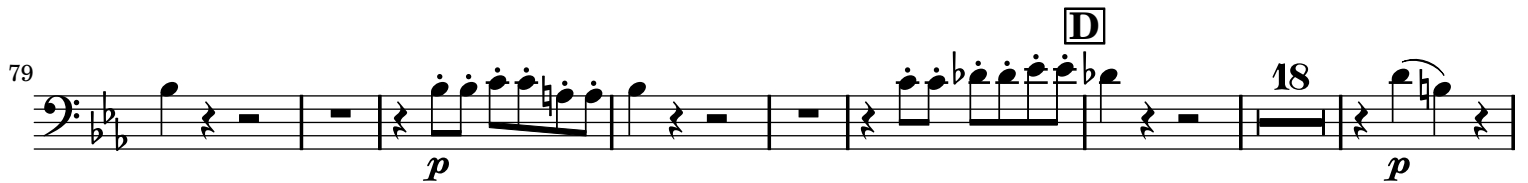
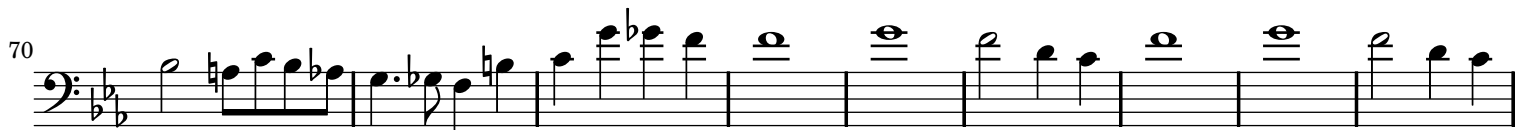
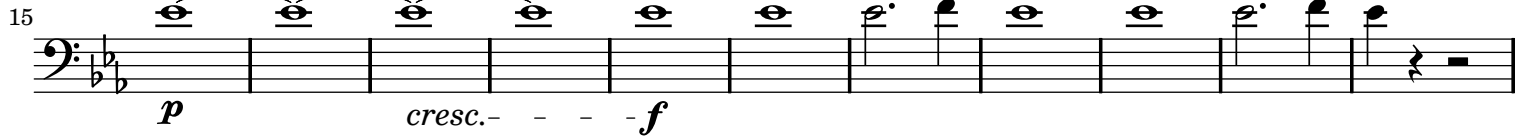
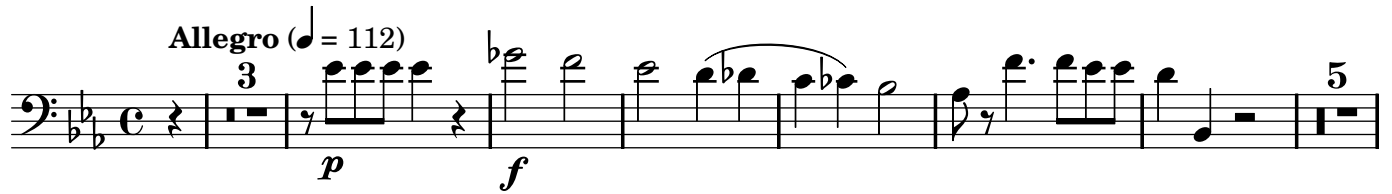


Horn Concerto in E \flat Major, K.447

Bassoon I

Wolfgang Amadeus Mozart (1756-1791)

Allegro (♩ = 112)



175

A

p *f*

Larghetto (♩ = 80)

Romanze

f *p* *f* *p*

19

f *f* *f* *p*

B

32

f *p* *sfz* *sfz* *sfz* *sfz* *f*

13 C

55

p *p*

D

70

f *p*

Allegro (♩ = 112)

Rondo

f *f*

13

p *f* *f*

21

f *f*

31

p *p*

A

51

p *p*

B

