

String Quartet KV. 387 (nr. 14)

for 2 violins, viola and cello

W. A. Mozart (1756-1791)

KV. 387

Allegro vivace assai.

Viola

6

13

19

25

31

37

42

47

52

57

f *p* *f* *p* *cresc.* *p* *cresc.* *f* *p* *f* *fp* *fp* *p* *p* *f* *p* *cresc.* *p* *cresc.* *p* *f* *p* *f* *p* *fp* *f* *p* *pp* *p* *f* *p* *f* *p* *fp* *f*

65 *f* *fp*

71 *f p* *f p*

76 *f p* *f p* *fp* *fp* *fp* *fp*

82 *p* *p*

87 *sf* *p* *fp*

92 *fp* *p*

97 *p* *pp* *tr*

102 *tr* *f* *calando*

107 *f* *p* *f* *p*

113 *cresc.* *pp* *cresc.* *f*

120 *p* *f* *p*

126 *cresc.* *f* *f* *fp* *fp*

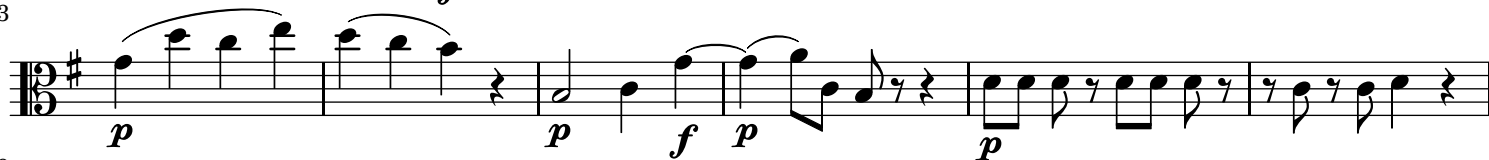
132



138



143



149



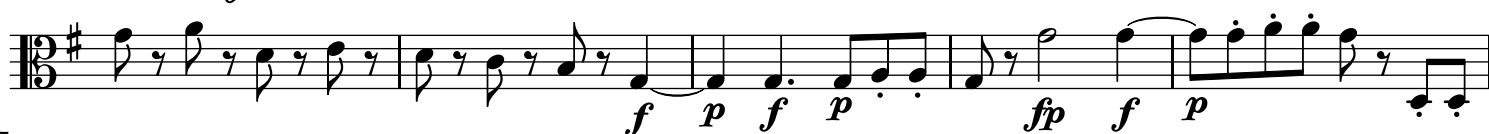
154



158



162



167



MINUETTO. Allegro.

KV. 387

Viola



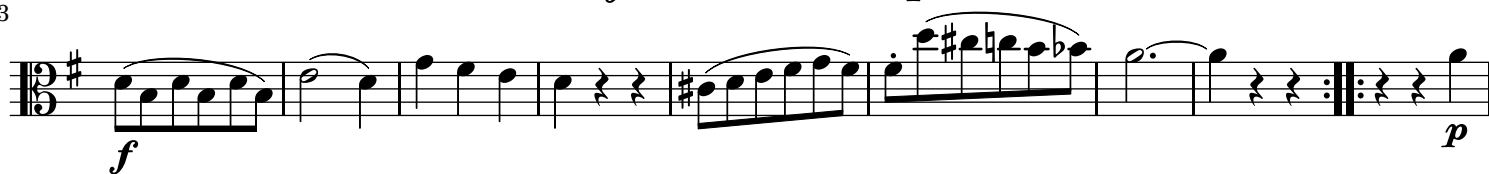
15

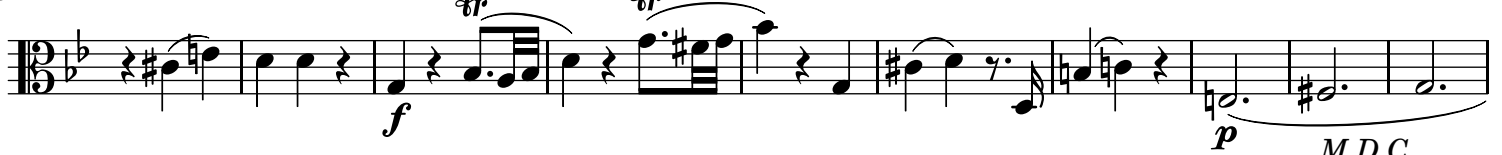
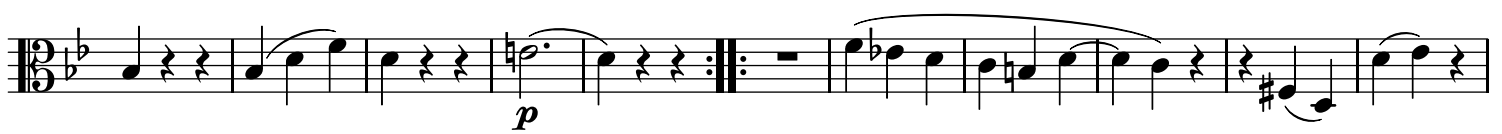
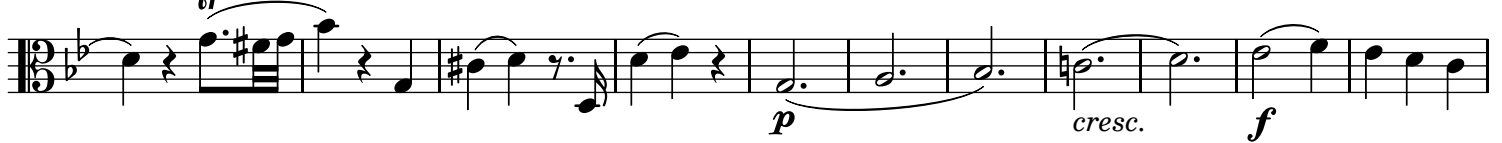
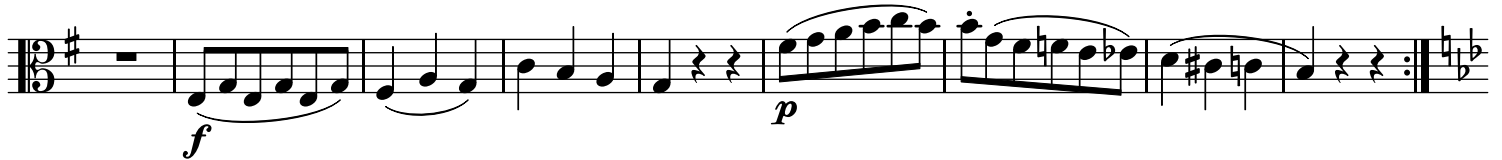
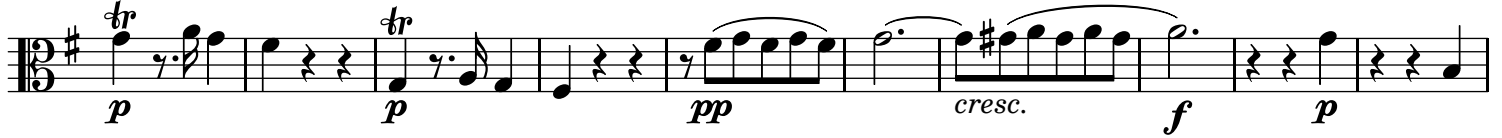
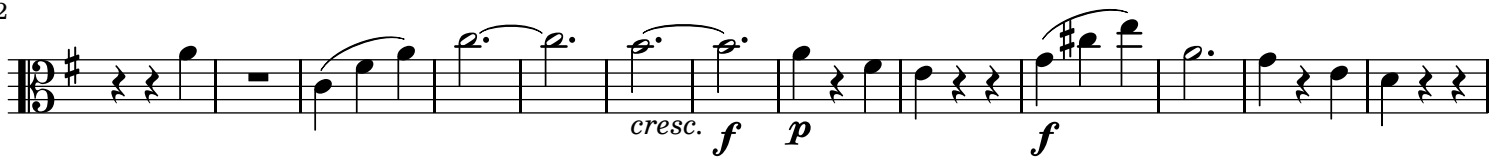


24



33





Andante cantabile.

Viola



15

23

29

35

42

47

53

61

71

79

85

91

p *sf* *p*

98

p *cresc.* *f*

103

p *tr* *pp*

KV. 387

Molto Allegro.

Viola

12

p

23

32

f *p*

40

f *p*

46

f *p* *f* *p* *f*

52

f

63

72

82

p

91



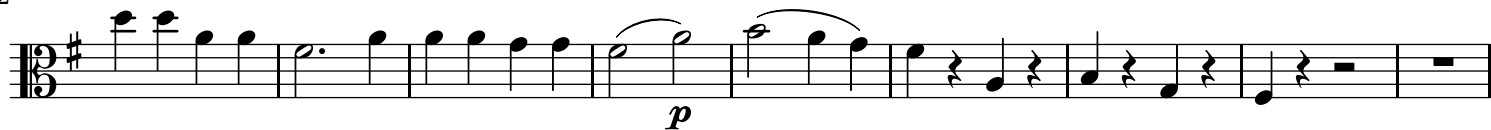
98



105



112



121



131



140



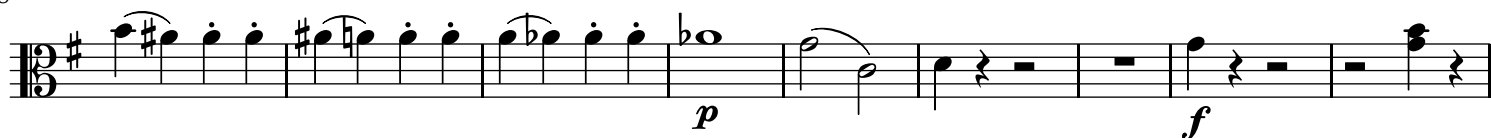
150



159



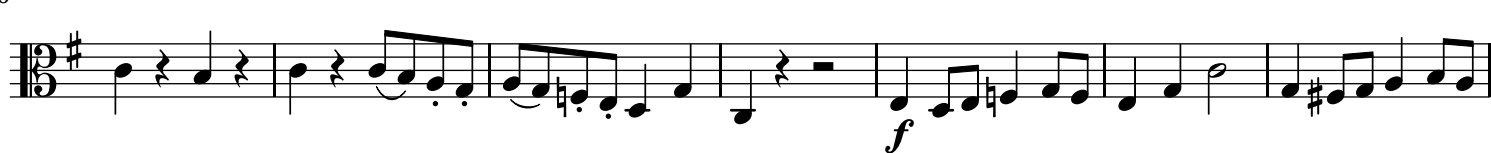
168



177



186



Sheet music for a piece in 3/8 time, starting at measure 193 and ending at measure 288. The key signature has one sharp (F#). The music features various dynamics (*p*, *f*, *decresc.*), articulations (trills, slurs), and complex rhythms including triplets and eighth-note patterns.

Measures 193-200: Introduction with a half note, quarter notes, and a half note, followed by a series of eighth notes.

Measures 200-206: A series of eighth notes, followed by a half note, quarter notes, and a half note.

Measures 206-218: A series of eighth notes, followed by a half note, quarter notes, and a half note.

Measures 218-226: A series of eighth notes, followed by a half note, quarter notes, and a half note.

Measures 226-234: A series of eighth notes, followed by a half note, quarter notes, and a half note.

Measures 234-242: A series of eighth notes, followed by a half note, quarter notes, and a half note.

Measures 242-250: A series of eighth notes, followed by a half note, quarter notes, and a half note.

Measures 250-258: A series of eighth notes, followed by a half note, quarter notes, and a half note.

Measures 258-268: A series of eighth notes, followed by a half note, quarter notes, and a half note.

Measures 268-278: A series of eighth notes, followed by a half note, quarter notes, and a half note.

Measures 278-288: A series of eighth notes, followed by a half note, quarter notes, and a half note.