

# Symphony nr. 18 in F major K. 130

## Wolfgang Amadeus Mozart (1756-1791)

Allegro.

Violino II

This musical score for Violino II spans measures 6 to 56. It begins with a treble clef, a key signature of one flat (B-flat), and a common time signature (C). The piece starts at measure 6 with a piano (*p*) dynamic. Measure 13 features a forte (*f*) dynamic. Measure 19 includes a piano (*p*) dynamic and a crescendo leading to a fortissimo (*cresc f*). Measure 25 has a piano (*p*) dynamic. Measures 31 through 39 are characterized by trills (*tr*). Measure 44 has a piano (*p*) dynamic. Measure 51 features a forte (*f*) dynamic. The score concludes at measure 56 with piano (*p*) and forte (*f*) dynamics.

62

[illegible]

67

72

79

86

2

92

97

102

106

111

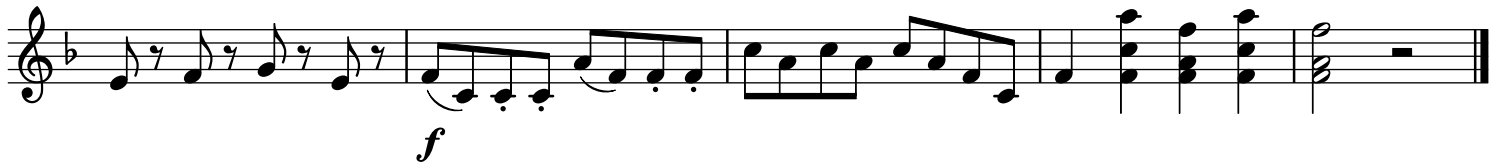
118

[illegible]

123

The first staff of the exercise is written in treble clef with a key signature of one flat (B-flat). It consists of 12 measures. The first three measures contain chords: B-flat2, D3, F3 in the first; B-flat2, D3, F3, A-flat3 in the second; and B-flat2, D3, F3, A-flat3 in the third. The fourth measure contains a half note B-flat2. The fifth measure contains a half note D3. The sixth measure contains a half note F3. The seventh measure contains a half note A-flat3. The eighth measure contains a half note B-flat2. The ninth measure contains a half note D3. The tenth measure contains a half note F3. The eleventh measure contains a half note A-flat3. The twelfth measure contains a half note B-flat2. Dynamic markings *p* (piano) and *f* (forte) are placed below the staff at the beginning of the eighth and tenth measures, respectively.

128



Andantino grazioso.



11



22



32



44



56



67



78



88



97



106



## 4

9

Trio.

*p*

*f*

*cresc.*

Allegro molto.

7

15

22

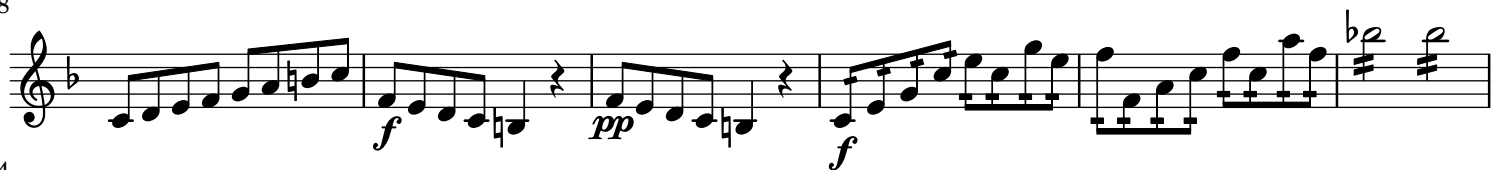
29

36

44

52

58



64



71



79



86



94



102



110



117



125



133



139



146



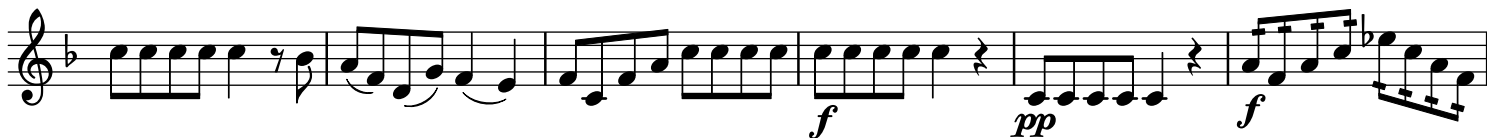
153



162



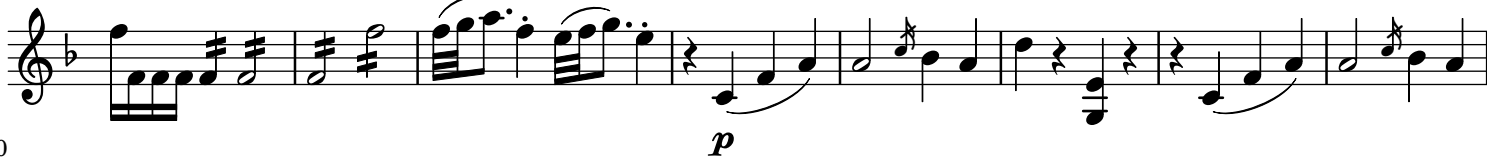
169



175



182



190

