

# OCTET

E-flat Major

Cello II

F. Mendelssohn-Bartholdy, Op. 20

**Allegro moderato ma con fuoco**

11 *p* *cresc.* *f* *fp* *f* *sf*

19 *sf* *sf* *sf* *sf* *p* *cresc.* *cresc.*

28 *f* *ff* *p* *A*

40 *f* *p* *cresc.* *f* *sf* *sf* *fp* *cresc.*

50 *f* *p* *cresc.* *p* *dim.* *pp* *C*

60 *cresc.* *f* *cresc.* *ff*

67 *sf pp* *3* *D* *pizz.* *arco* *sf pp*

79 *sf pp* *pizz.* *E*

89 *f sf* *arco* 2 3

97 *ff* *sempre ff* *f* **F**

107 *cresc.* - - - - *ff*

113 **G** *f* *sf*

120 *ff* 1.

128 *fp* 2.

136 *sf* *sf* *sf*

142 **H** *ff*

151 *f* *dim.* - - - *mf* *dim.* -

160 **J** 9 *sfp* *p* 3

182 **K** 9 **L**

*pp* *p* *cresc.* *mf* *cresc.*

204

213 *f* *cresc.* *ff*

218 *sempre ff* *fp* *cresc.* **M**

224 *f* *fp* *cresc. - f* *sf* *sf* *p*

233 *cresc.* *f* *sf* *fp* *dim.* *pp* **poco rit.**

244 **N** *a tempo* *pizz.*

252 2 *arco* *p cresc.* *f* *sf* *ff* **O**

263 *f* *ff*

271 **P** *f* *sf*

278 *ff* *p* *ff* *p*

285

Q



296

R



305



315



## Andante



20

B

pizz.

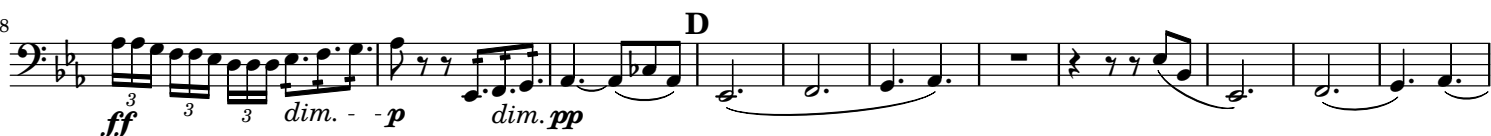


28



38

D



49

E

dolce

dolce



58



66

F



73

G



85

H

sul C.



97



# Allegro leggerissimo



20



32



47



65



76



97



111



128



146



157 *tr*

174 **K**

186 **L**

199 **M** **N** *sf*

215 *f* **3** **O** *pp*

230

237 *dim.* - - - - -

**Presto**

*f*

9

20 **A** *ff*

31

43 **B** **7**

59 *p* *cresc.* *mf* *cresc.* - *f* C 2 7 *p*

77 2 D

90 2 E 9

109 2

121 F 11 G *cresc.* - - - - - *cresc.* - -

143 H 3 *f* *p* *cresc.* - - - - -

157 - *cresc.* - - - - - *f* *f* *ff* *p* J

166 *pp* <> <>

180 9 K *f*

197 L *ff*

209 7 M *f*

227

240 **3** **N**

256 **0**

267 **P** **2**

281 **7** **Q**

298 *sempre piu f*

308 **ff**

318 **R** **ff**

326 **S** **sf**

340

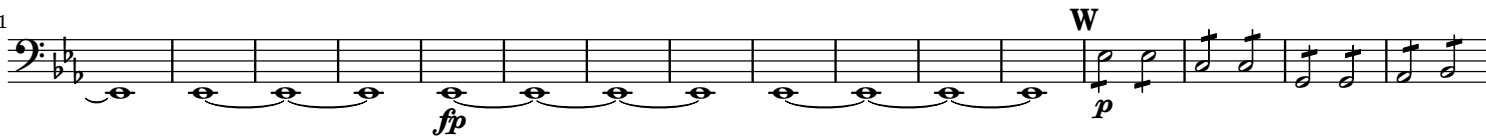
351 **T** **f**

363 **U** **sf** **sf**

377



391



407



421

