

# Symphonie en sol mineur

Basson 1

Etienne MEHUL

## I

**Allegro**

*f*

14

21

**[A]**

34

42

*pp* *cresc.*

**[B]**

53

*ff*

77

*ff*

**[C]**

88

95

8

**D**

108 *fp* *f* 2 2

120 *p*

128 *mf*

**E**

137 3 *ff* *tr*

148 *ff* *tr*

155 *ff* *tr*

168 10 3

188

194 *ff*

**G**

199 *p* 4 *fp*

213 *f*

227 *f* *p*

237 *cresc.* *ff* **H**

248 *p*

257 *cresc.* *ff*

268

276

## II

Andante

**A** *p* *p*

**B** *p*

**C** Mineur **D** *fp* *fp*

64 Basses **E** **F**

*p*

3

77 **G**

88 **H** Majeur 8 *p*

104 **I** 3 *dol.* *p*

117 **K** 6

132 **L** Basses 15 6

152

**M** *ff* *mf*

167 *ff*

N



184



187



190



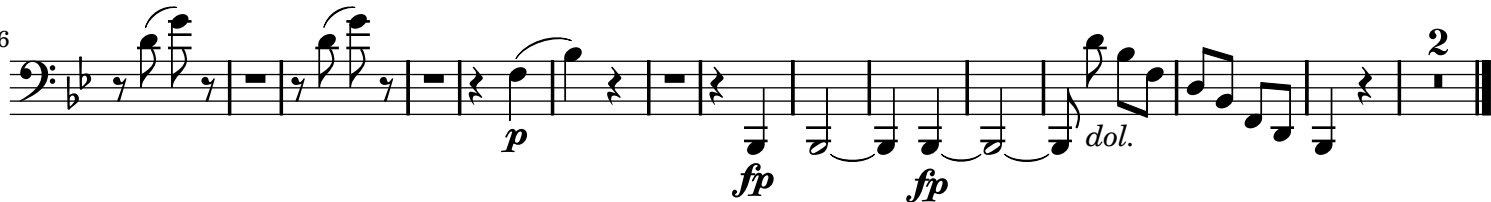
196



204

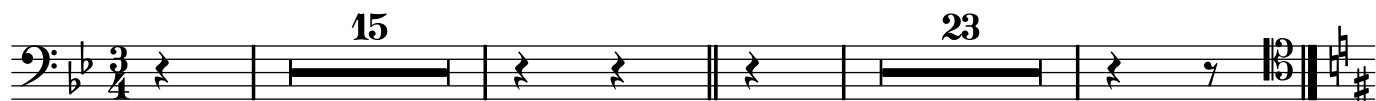


226



## III

## Allegro moderato



## Trio



50 *mf* *mf*

60 *dol.* *p*

72 *mf* *f*

80 3

91 *ff* 15 3

116 3

128 *ff*

139 3 11

164 *p* *f*

175

## IV

## Allegro Agitato

10 *p*

18 *f*

28 *fp*

33 *f*

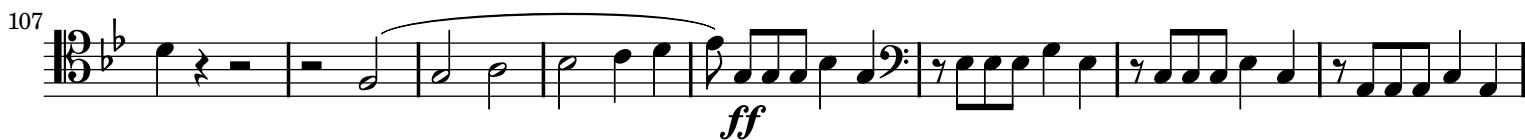
38 *f*

43 *f*

48 *f*

56 *fp* *f* *fp* *p*

**A**





146 *p*

154

164 *cresc.* - - - - - *ff*

174 *dol.* *p*

182

192 *f* *f*

197

202

207

212 3

The musical score for Basson 1, measures 146 to 212, is written in bass clef with a key signature of one flat (B-flat). The score is divided into measures of 8, 8, 8, 8, 8, 8, 8, and 4 measures respectively. The dynamics range from piano (p) to fortissimo (ff). The score includes various musical notations such as slurs, ties, and triplet markings.

221 *p*

230 *f* *p* *p* *ff*

239 *p*

247

256 *cresc.-* *cresc.-* *cresc.-*

268 *p* *cresc.-*

277 *p* *cresc.-* *ff*

286

293

300

309