

Membra Jesu nostri

Violino 1
No.1 - Ad pedes

D.Buxtehude

Sonata

Musical score for Sonata, Violino 1, measures 1-13. The key signature is B-flat major (two flats). The time signature is common time (C). The melody is written on a single staff. Measures 1-4 show a series of eighth and sixteenth notes, with a slur over measures 3-4. Measures 5-8 continue the melodic line with various note values and slurs. Measures 9-13 conclude the section with a final cadence.

Tutti

Musical score for Tutti, Violino 1, measures 14-28. The key signature remains B-flat major. The time signature changes to 4/4 at measure 14. Measures 14-18 show a more active melodic line with eighth and sixteenth notes. Measures 19-22 feature a series of eighth notes. Measures 23-28 continue the melodic development with various note values and slurs.

Aria Soprano 1mo

Ritornello

Musical score for Aria Soprano 1mo and Ritornello, measures 35-53. The key signature is B-flat major. The time signature is 12/8. Measures 35-38 show a series of eighth notes. Measures 39-42 continue the melodic line. Measures 43-46 feature a series of eighth notes. Measures 47-50 continue the melodic development. Measures 51-53 conclude the section with a final cadence.

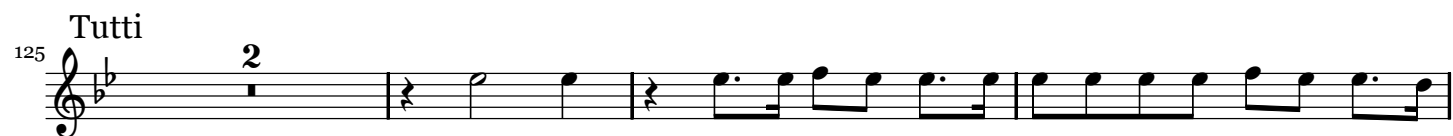
Soprano 2do

Ritornello

Musical score for Soprano 2do and Ritornello, measures 58-66. The key signature is B-flat major. The time signature is 12/8. Measures 58-61 show a series of eighth notes. Measures 62-65 continue the melodic line. Measures 66 conclude the section with a final cadence.

2

Violino 1



Violino 1
No.2 - Ad Genua

3

Sonata in tremulo

Musical score for Sonata in tremulo, measures 1-22. The score is written in treble clef, key of B-flat major (two flats), and common time (C). The melody consists of eighth and quarter notes, with some measures containing beamed eighth notes. Measure numbers 8, 15, and 22 are indicated at the start of their respective staves.

Tutti

Musical score for Tutti, measures 29-76. The score is written in treble clef, key of B-flat major (two flats), and 3/4 time. The melody features eighth and quarter notes, with some measures containing beamed eighth notes. Measure numbers 29, 44, 50, 56, 64, and 70 are indicated at the start of their respective staves. A '10' is written above measure 30, and a '2' is written above measure 57.

Aria Tenor

Ritornello

Musical score for Aria Tenor and Ritornello, measures 76-85. The score is written in treble clef, key of B-flat major (two flats), and common time (C). The melody consists of eighth and quarter notes, with some measures containing beamed eighth notes. Measure number 76 is indicated at the start of the staff. A '10' is written above measure 77.

4 Violino 1

89

Alto Ritornello

93 10

106

à 3 do Soprani è Basso Ritornello

110 10

123

Tutti

127 10

143

149

155 2

163

169

Violino 1
No.3 - Ad Manus

5

Sonata

Musical notation for the Sonata section, measures 1 through 13. The key signature is one flat (B-flat), and the time signature is common time (C). The notation is written on a single staff.

Tutti

Musical notation for the Tutti section, measures 14 through 35. The key signature is one flat (B-flat). The notation is written on a single staff. Measure numbers 14, 20, 27, and 30 are indicated at the start of their respective measures. There are triplets in measures 15 and 21, and a quadruplet in measure 28.

Aria Soprano 1mo Ritornello

Musical notation for the Aria Soprano 1mo Ritornello section, measures 36 through 89. The key signature is one flat (B-flat), and the time signature is 3/4. The notation is written on a single staff. Measure numbers 40, 81, and 89 are indicated at the start of their respective measures. There is a triplet in measure 40.

Soprano 2do

Ritornello

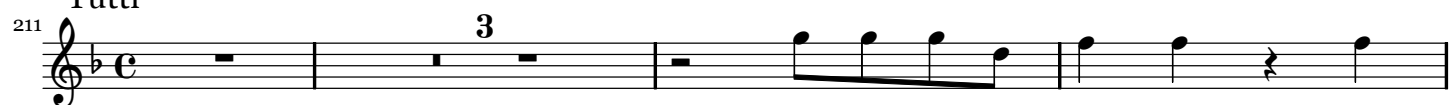


Ritornello

à 3 Alto, Tenor è Basso



Tutti



Violino 1
No.4 - Ad Latus

7

Sonata

Musical notation for the Sonata section, measures 1 through 15. The key signature is one flat (B-flat), and the time signature is 4/4. The notation is written on a single staff in treble clef. Measures 1-5 show a series of eighth and quarter notes. Measures 6-10 continue the melodic line with some chromaticism. Measures 11-15 conclude the section with a final half note and a whole note.

Tutti

Musical notation for the Tutti section, measures 16 through 63. The key signature remains one flat, and the time signature changes to 3/4. The notation is written on a single staff in treble clef. Measures 16-25 feature a triplet of eighth notes followed by quarter notes. Measures 26-32 show a more active melodic line. Measures 33-45 include a septuplet of eighth notes. Measures 46-52 continue the melodic development. Measures 53-63 conclude the section with a final half note and a whole note.

Aria Soprano 1mo Ritornello

Musical notation for the Aria Soprano 1mo Ritornello section, measures 75 through 93. The key signature is one flat, and the time signature is 3/4. The notation is written on a single staff in treble clef. Measures 75-84 show a series of quarter and eighth notes. Measures 85-93 conclude the section with a final half note and a whole note.

à3 Alto Tenor Basso

Ritornello



Soprano 2do

Ritornello



Tutti



Violino 1
No.5 - Ad Pectus

9

Sonata

Musical score for Sonata, Violino 1, measures 1-12. The score is written on a single staff in treble clef, common time (C). The key signature has one sharp (F#). The melody consists of eighth and sixteenth notes, with some rests and a final half note in measure 12.

Voci Alto, Tenore è Basso

Musical score for Voci Alto, Tenore è Basso, measures 13-15. The score is written on a single staff in treble clef, common time (C). The key signature has one sharp (F#). The melody consists of eighth and sixteenth notes, with some rests and a final half note in measure 15.

Aria Alto

Ritornello

Musical score for Aria Alto and Ritornello, measures 71-93. The score is written on a single staff in treble clef, common time (C). The key signature has one sharp (F#). The melody consists of eighth and sixteenth notes, with some rests and a final half note in measure 93.

Tenor

Ritornello

Musical score for Tenor and Ritornello, measures 94-96. The score is written on a single staff in treble clef, common time (C). The key signature has one sharp (F#). The melody consists of eighth and sixteenth notes, with some rests and a final half note in measure 96.

10

Violino 1

112

Basso con Stromenti

117

120

122

125

128

Ritornello

130

133

135

137

Voci Alto, Tenore è Basso

140

15

28

15

Violino 1
No.6 - Ad Cor - tacet
No.7 - Ad Faciem

11

Sonata

Musical score for Sonata, measures 1-13. The key signature is B-flat major (two flats). The time signature is common time (C). The notation is in treble clef. Measures 1-4 show a melodic line with eighth and sixteenth notes. Measures 5-8 continue the melody with some rests. Measures 9-13 show a more active melodic line with eighth notes and a final cadence.

Tutti

Musical score for Tutti, measures 14-30. The key signature remains B-flat major. Measures 14-19 show a melodic line with eighth notes and a dynamic marking of *p* (piano) at measure 19. Measures 20-24 show a melodic line with eighth notes and a dynamic marking of *p* at measure 24. Measures 25-30 show a melodic line with eighth notes and a dynamic marking of *p* at measure 30.

Alto, Tenore è Basso con Violini

Musical score for Alto, Tenore è Basso con Violini, measures 31-66. The key signature remains B-flat major. Measures 31-36 show a melodic line with eighth notes and a dynamic marking of *p* at measure 36. Measures 37-42 show a melodic line with eighth notes and a dynamic marking of *p* at measure 42. Measures 43-48 show a melodic line with eighth notes and a dynamic marking of *f* (forte) at measure 48. Measures 49-54 show a melodic line with eighth notes and a dynamic marking of *p* at measure 54. Measures 55-60 show a melodic line with eighth notes and a dynamic marking of *p* at measure 60. Measures 61-66 show a melodic line with eighth notes and a dynamic marking of *f* at measure 66.

Aria Alto

Ritornello



Tutti



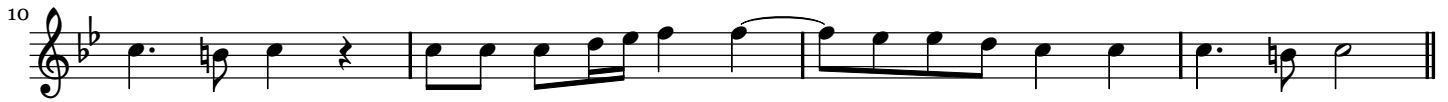
Amen



Violino2
Membra Jesu nostri
Violino2
No.1 - Ad pedes

D.Buxtehude

Sonata



Tutti



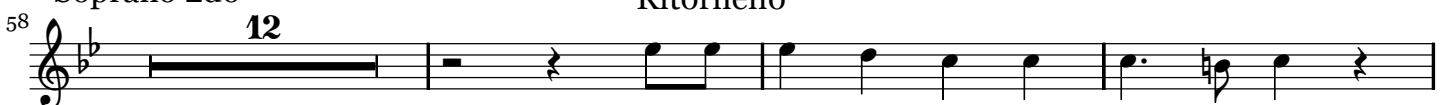
Aria Soprano 1mo

Ritornello



Soprano 2do

Ritornello



14 Violino2

73

77

81 Basso Ritornello

12

96

100

104 Tutti

4

113

118

3

125 Tutti

2

130

133

16 Violino2

89

Alto Ritornello

93 10

106

à 3 do Soprani è Basso Ritornello

110 10

123

Tutti

127 10

143

149

155 2

163

169

Violino2
No.3 - Ad Manus

17

Sonata



Tutti



Aria Soprano 1mo

Ritornello



Ritornello

Soprano 2do



Ritornello

à3 Alto, Tenor è Basso



Tutti



Violino2
No.4 - Ad Latus

Sonata

Musical score for Sonata, measures 1-15. The key signature is one flat (B-flat). The time signature is 4/4. The melody consists of eighth and quarter notes, with a key signature change to two sharps (F# and C#) at measure 10.

Tutti

Musical score for Tutti, measures 16-73. The key signature is one flat (B-flat). The time signature is 3/2. The score includes measures 16-25, 26-32, 33-45, 46-52, 53-63, and 64-73. It features various rests and melodic lines, with fingerings 3, 7, and 5 indicated above certain notes.

Aria Soprano 1mo Ritornello

Musical score for Aria Soprano 1mo Ritornello, measures 75-93. The key signature is one flat (B-flat). The time signature is 3/2. The score includes measures 75-93, starting with a 13-measure rest at measure 75.

Ritornello

[illegible][illegible]

Ritornello

129 **13**

148



148

Tutti

156

3

165

Musical notation for measure 165, featuring a treble clef, a key signature of one flat (B-flat), and a 4/4 time signature. The melody consists of eighth and quarter notes.

[illegible][illegible]

189

189

195 **5**



Measure 195: A whole rest, followed by a half note G4, a half note A4, a quarter note B4, a quarter note A4, a quarter note G4, and a whole rest.

205

5

Violino2
No.5 - Ad Pectus

Sonata

Musical score for Sonata, Violino 2, measures 1-12. The score is written in treble clef with a common time signature (C). The melody consists of eighth and sixteenth notes, with some rests and accidentals (sharps and flats).

Voci Alto, Tenore è Basso

Musical score for Voci Alto, Tenore è Basso, measures 13-31. The score is written in treble clef with a common time signature (C). It features a long rest of 15 measures, followed by a 3/4 time signature change, another long rest of 28 measures, and a final long rest of 15 measures.

Aria Alto

Musical score for Aria Alto, measures 71-86. The score is written in treble clef with a common time signature (C). It features a long rest of 15 measures, followed by a short rest, and then a melodic phrase.

Ritornello

Musical score for Ritornello, measures 87-88. The score is written in treble clef with a common time signature (C). It features a melodic phrase starting with a sharp sign.

Musical score for Ritornello, measures 89-90. The score is written in treble clef with a common time signature (C). It features a melodic phrase starting with a sharp sign.

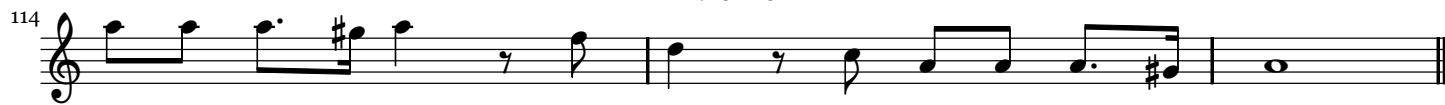
Musical score for Ritornello, measures 91-93. The score is written in treble clef with a common time signature (C). It features a melodic phrase starting with a sharp sign.

Tenor

Musical score for Tenor, measures 94-110. The score is written in treble clef with a common time signature (C). It features a long rest of 15 measures, followed by a short rest, and then a melodic phrase.

Ritornello

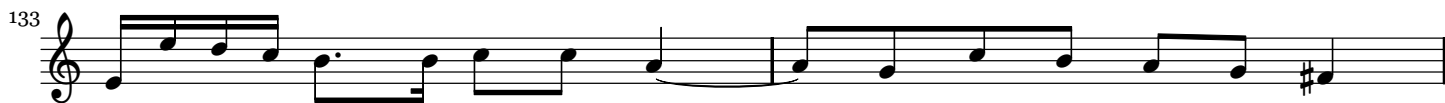
Musical score for Ritornello, measures 111-112. The score is written in treble clef with a common time signature (C). It features a melodic phrase starting with a sharp sign.



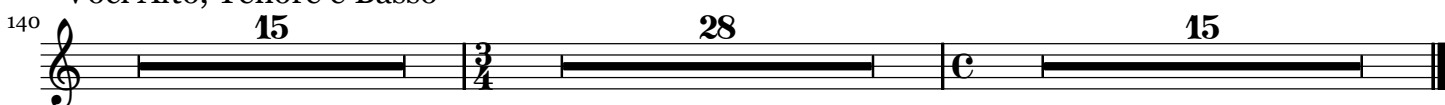
Basso con Stromenti



Ritornello



Voci Alto, Tenore è Basso



No.6 - Ad Cor - tacet

No.7 - Ad Faciem

Sonata

5

10

Tutti

14

24

32

Alto, Tenore è Basso con Violini

38

46

57

64

69

Aria Alto

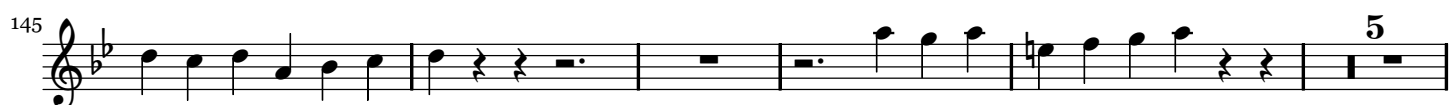
Ritornello



Tutti



Amen



Violon
Membra Jesu nostri
Violon
No.1 - Ad pedes

D.Buxtehude

Sonata

Measures 1-13 of the Sonata section. The notation is in bass clef with a key signature of two flats (B-flat and E-flat) and a common time signature (C). The music features a series of eighth and sixteenth notes, with some rests and a final double bar line at measure 13.

Tutti

Measures 14-28 of the Tutti section. The notation is in bass clef with a key signature of two flats. Measure 14 has a '4' above it, indicating a four-measure rest. Measures 21 and 29 have '3' above them, indicating a three-measure rest. The section ends with a double bar line at measure 28.

Aria Soprano 1mo

Ritornello

Measures 35-51 of the Aria Soprano 1mo and Ritornello section. The notation is in bass clef with a key signature of two flats. Measure 35 has a '12' above it, indicating a twelve-measure rest. The section ends with a double bar line at measure 51.

Soprano 2do

Ritornello

Measures 58-74 of the Soprano 2do and Ritornello section. The notation is in bass clef with a key signature of two flats. Measure 58 has a '12' above it, indicating a twelve-measure rest. The section ends with a double bar line at measure 74.

81 Basso 12 Ritornello

98

104 Tutti 4

112

116

119 3

125 Tutti 2

128

130

132

134

Violon
No.2 - Ad Genua

Sonata in tremulo



Tutti



Aria Tenor

Ritornello



89

Alto

93

10

Ritornello

106

à 3 do Soprani è Basso

110

10

Ritornello

123

Tutti

127

10

142

3

150

155

2

162

168

Violon
No.3 - Ad Manus

Sonata



Aria Soprano 1mo Ritornello



Soprano 2do

Ritornello

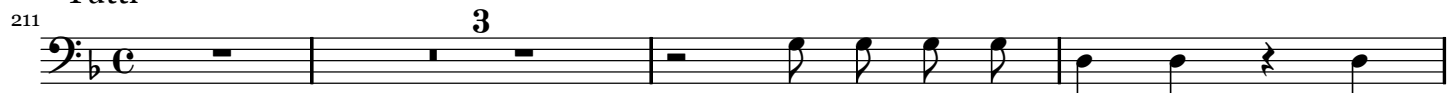


Ritornello

à 3 Alto, Tenor è Basso



Tutti



Violon
No.4 - Ad Latus

Sonata



Tutti



Aria Soprano 1mo Ritornello



à3 Alto Tenor Basso

Ritornello



Soprano 2do

Ritornello



Tutti

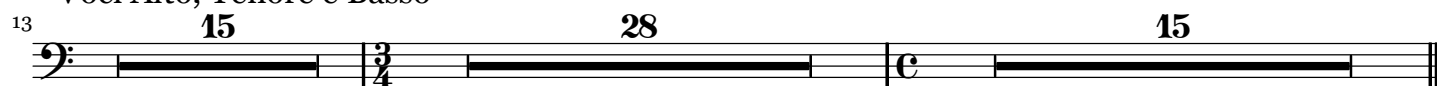


Violon
No.5 - Ad Pectus

Sonata



Voci Alto, Tenore è Basso



Aria Alto



Ritornello



Tenor

Ritornello



114



Basso con Stromenti

117



120



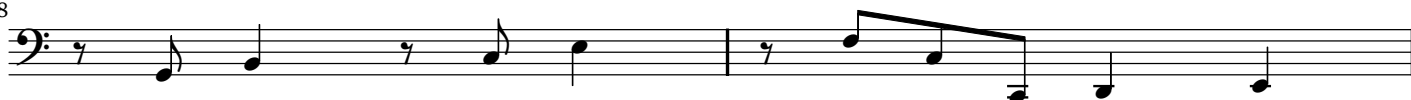
123



126



128



130



Ritornello

132



134

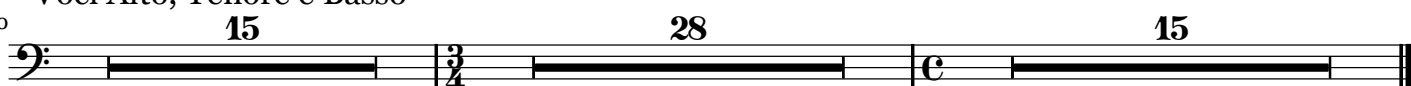


137



Voci Alto, Tenore è Basso

140



No.6 - Ad Cor - tacet

No.7 - Ad Faciem

Sonata



Tutti



Alto, Tenore è Basso con Violini



Aria Alto

Ritornello



Tutti



Amen



Viola (da gamba) 1
Membra Jesu nostri
Viola (da gamba) 1
No.6 - Ad Cor

D.Buxtehude

adagio allegro

6

10

17

22

28

32

35

Ritornello
Doi Soprani è Basso

39

67

Aria Soprano I Ritornello

73

Ritornello

Aria Soprano Secondo



Aria Basso



Ritornello



Doi Soprani è Basso

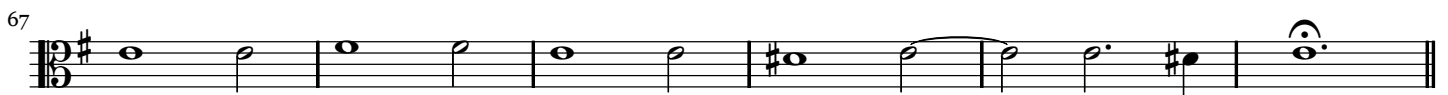


Viola (da gamba) 2
Membra Jesu nostri
Viola (da gamba) 2
No.6 - Ad Cor

D.Buxtehude

adagio

allegro



Aria Soprano Secondo Ritornello



Aria Basso



Ritornello



Doi Soprani è Basso



Viola (da gamba) 3
Membra Jesu nostri
Viola (da gamba) 3
No.6 - Ad Cor

D.Buxtehude

adagio

allegro

6

9

13

16

19

24

29

32

35

39

23

Ritornello

Doi Soprani è Basso



Aria Soprano I Ritornello



Ritornello

Aria Soprano Secondo



Aria Basso

Ritornello



Doi Soprani è Basso



D.Buxtehude

allegro

 CC BY-SA



Aria Soprano Secondo Ritornello



Aria Basso Ritornello



Doi Soprani è Basso



D.Buxtehude

allegro

 CC BY-SA

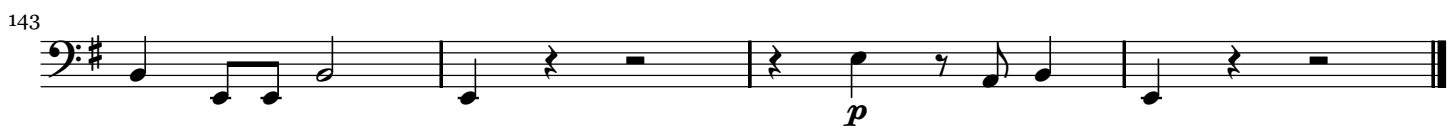
Aria Basso



Ritornello



Doi Soprani è Basso



Continuo
Membra Jesu nostri
Continuo
No.1 - Ad pedes

D.Buxtehude

Sonata

Continuo part for the Sonata section, measures 1-13. The notation is in bass clef with a key signature of one flat (B-flat). It includes various musical symbols such as notes, rests, and accidentals, along with figured bass notation (e.g., 6 7 6, 9 8, 7 6 #, 6 b 6, 5, 6 7 6, 4 5 #, 6 4 3, 6 5 7 6, 4 5 #).

Tutti

Continuo part for the Tutti section, measures 14-27. The notation is in bass clef with a key signature of one flat. It includes various musical symbols and figured bass notation (e.g., b b, 6b 6b, b b b 7, 6, 7 6 #, 6 6, 6 5b, 6 5b, 6 5b, 6 5b, b b, 6 5b, 6 4 3b, 4 5 7 6 #, 5 4 # #).

Aria Soprano 1mo

Continuo part for the Aria Soprano 1mo section, measures 28-39. The notation is in bass clef with a key signature of one flat. It includes various musical symbols and figured bass notation (e.g., 6 5b, b b, 6 5b, 6 4 #, 6 5, 6 4 5 4 #, 4 2b b, 6 5 4 3, 6 6, 7 6b 5b, 7 6 5b, 6 7 #, 7 5 4 #, 7 6 5b b, 7 # 5b, 6).

Ritornello

Continuo part for the Ritornello section, measures 40-51. The notation is in bass clef with a key signature of one flat. It includes various musical symbols and figured bass notation (e.g., 7 #, 6 7 5 4 #, 6 5 6 5 6 5 7 6 4 #, 6, 6 6, 6 6, 6 4+, 4+ 5 6, b b 6 b, b 5 4 #).

Soprano 2do

Continuo part for the Soprano 2do section, measures 52-63. The notation is in bass clef with a key signature of one flat. It includes various musical symbols and figured bass notation (e.g., 6 4 #, 6 5, 6 4 5 4 #, 4 2b b, 6 5 4 3, 6 6, 7 6b 5b, 7 6 5b, 6 7 #, 7 5 4 #, 7 6 5b b, 7 # 5b, 6 7 # 6).

Ritornello



Basso



Ritornello



Tutti



Tutti



No.2 - Ad Genua

Sonata in tremulo

11

20

Tutti

29

38

48

58

68

Aria Tenor

76

82

87

Ritornello

82

87

Alto



Ritornello



à 3 do Soprani è Basso



Ritornello



Tutti



Continuo
No.3 - Ad Manus

Sonata

6^b₃ 4 3 4₂

6 6 6 5

9

6 6 6^b 5 4 3

7_b 6 6[#] 7₅ 6 4 5[#]

Tutti

14

6^b₅

6 6^b 5_b 6[#]

23

3₂ 7₅ 5₄ [#]

6^b 5_b 6[#] 6^b 7 6 6

31

6₄ 5₃

10_{4^b} 9 9 8

6 9₇ 8₆ 7_# 6₄ 6₄ 5_#

Aria Soprano 1mo

40

6 6^b 7 5⁺ 7 5 6^b 4⁺₂

6 7 6

6 7 6^b 7

51

7 7 6[#]

6 5_b

6 6 5 4₃

6 5 6 6^b 5 4 3

62

6 5 6[#] 6^b

6 5 5₄ [#]

6[#] 6 6 4₅ [#]

Ritornello

74

6 6 7 6[#] 5 5₄ [#]

6 7 6 6^b 6

6 7 6

85

[#] 8_b 7 7₃ 7 6 7 6

6 6^b 6 5 6[#] 5 6 6 7₅ 5₄ [#]

Soprano 2do

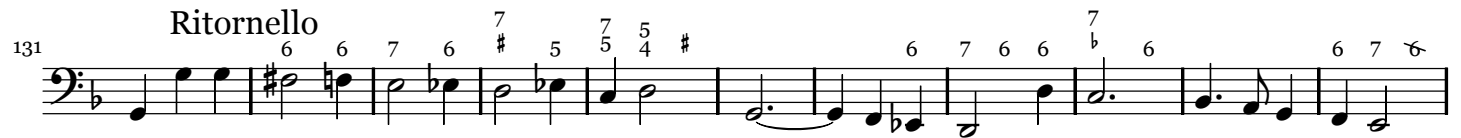
97

6 6^b 7 5⁺ 7 5 6^b 4⁺₂

6 7 6

6 7 6^b 7

7 7 6



à3 Alto, Tenor è Basso



Continuo
No.4 - Ad Latus

Sonata

6

9

Tutti

16

23

29

35

42

48

55

62

68

Aria Soprano 1mo

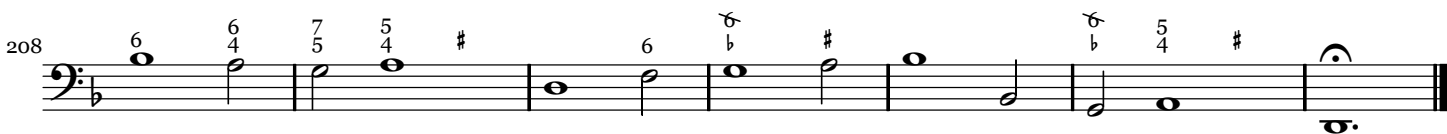
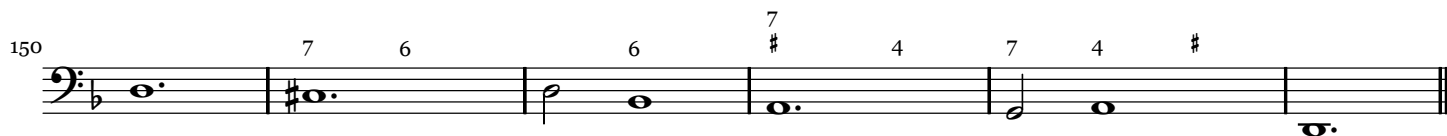
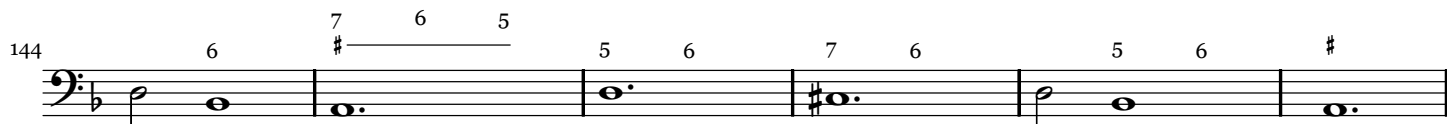


à3 Alto Tenor Basso



Soprano 2do





Continuo
No.5 - Ad Pectus

55

Sonata



Voci Alto, Tenore è Basso



Aria Alto



Continuo

56
76 5 6 6 6 6

81

Ritornello

85 4 #

89 7 7 4 # 6 4 #

Tenor

94 6 5 6 4 # 6 6 6

98 5 6 6 6 6 6

103 # 6 4 #

Ritornello

107 6 4 # 4 #

112 7 7 4 # 6 4 #

Basso con Stromenti

117 4 # 4 # 6 4 6 6 6

122 7 6 5 6 6 4 #



Ritornello



Voci Alto, Tenore è Basso



Ritornello



Aria Soprano Secondo



Ritornello



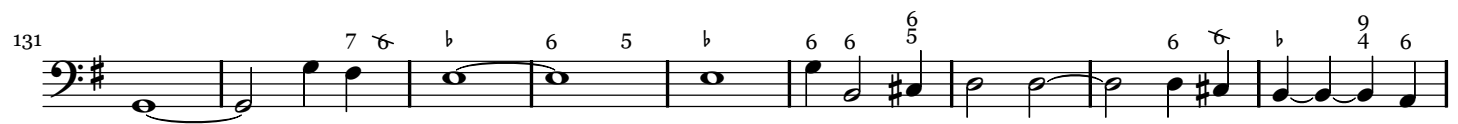
Aria Basso



Ritornello



Doi Soprani è Basso



Continuo
No.7 - Ad Faciem

Sonata

Measures 1-13 of the Sonata section. The music is in bass clef with a key signature of two flats (B-flat and E-flat) and a common time signature (C). Fingerings are indicated by numbers 1-5 above the notes. Measure 10 starts with a measure rest.

Tutti

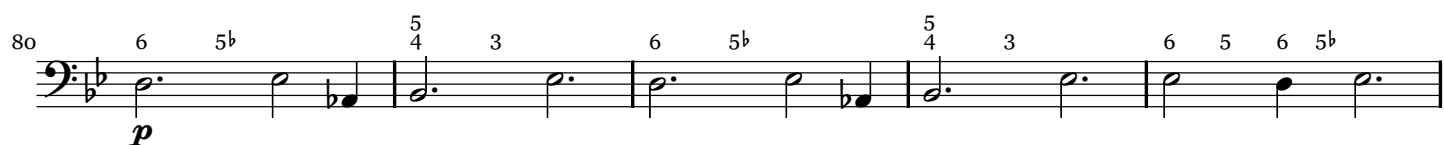
Measures 14-31 of the Tutti section. The music is in bass clef with a key signature of two flats. Measure 14 starts with a measure rest. A piano (p) dynamic marking is present at measure 15. Measure 20 contains a measure rest. Measure 31 ends with a double bar line.

Alto, Tenore è Basso con Violini

Measures 38-57 of the section for Alto, Tenore è Basso con Violini. The music is in bass clef with a key signature of two flats. Measure 38 starts with a measure rest. A piano (p) dynamic marking is present at measure 56. Measure 57 ends with a double bar line.



Aria Alto



Ritornello



Tutti



Amen

Amen

124

128

132

136

140

144

148

152

157

162

167