

Partita V

Clavierübung part I

J. S. Bach

BWV 829

2. Allemande

The musical score for the 2. Allemande from Partita V, BWV 829, is presented in G major and 3/4 time. The piece consists of 12 measures, divided into four systems of two staves each (treble and bass). The notation includes various musical symbols such as triplets, slurs, and accidentals, indicating a complex and technically demanding piece. The first system (measures 1-4) begins with a treble staff entry and a bass staff entry, both featuring triplets. The second system (measures 5-8) continues the melodic and harmonic development. The third system (measures 9-12) concludes the piece with a final cadence. The score is written in a clear, legible font, suitable for a printed edition.

9

Measures 9 and 10 of a piano piece in G major. Measure 9 features a treble staff with a triplet of eighth notes (G4, A4, B4) and a bass staff with a triplet of eighth notes (G3, A3, B3). Measure 10 continues the triplet pattern in both staves, with the treble staff ending on a dotted half note G4 and the bass staff on a dotted half note G3.

11

Measures 11 and 12. Measure 11 has a treble staff with a triplet of eighth notes (B4, C5, D5) and a bass staff with a triplet of eighth notes (A3, B3, C4). Measure 12 features a treble staff with a triplet of eighth notes (E5, F5, G5) and a bass staff with a triplet of eighth notes (D4, E4, F4). The piece concludes with a double bar line and repeat signs.

13

Measures 13 and 14. Measure 13 has a treble staff with a triplet of eighth notes (G5, A5, B5) and a bass staff with a triplet of eighth notes (G3, A3, B3). Measure 14 continues the triplet pattern in both staves, with the treble staff ending on a dotted half note G5 and the bass staff on a dotted half note G3.

15

Measures 15 and 16. Measure 15 has a treble staff with a triplet of eighth notes (A5, B5, C6) and a bass staff with a triplet of eighth notes (A3, B3, C4). Measure 16 continues the triplet pattern in both staves, with the treble staff ending on a dotted half note A5 and the bass staff on a dotted half note A3.

17

Measures 17 and 18. Measure 17 has a treble staff with a triplet of eighth notes (B5, C6, D6) and a bass staff with a triplet of eighth notes (B3, C4, D4). Measure 18 continues the triplet pattern in both staves, with the treble staff ending on a dotted half note B5 and the bass staff on a dotted half note B3.

19

Measures 19-20 of a musical score in G major. Measure 19 features a treble staff with eighth-note triplets and a bass staff with a triplet of eighth notes. Measure 20 continues with similar triplet patterns and includes a fermata over the final notes.

21

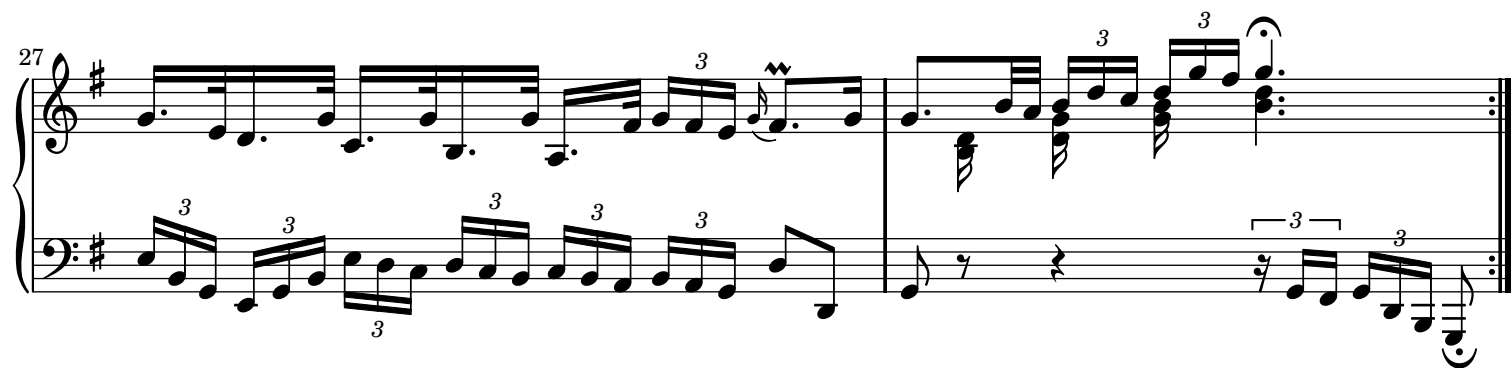
Measures 21-22 of a musical score in G major. Measure 21 has a treble staff with eighth-note triplets and a bass staff with a triplet of eighth notes. Measure 22 continues with similar triplet patterns and includes a fermata over the final notes.

23

Measures 23-24 of a musical score in G major. Measure 23 features a treble staff with eighth-note triplets and a bass staff with a triplet of eighth notes. Measure 24 continues with similar triplet patterns and includes a fermata over the final notes.

25

Measures 25-26 of a musical score in G major. Measure 25 has a treble staff with eighth-note triplets and a bass staff with a triplet of eighth notes. Measure 26 continues with similar triplet patterns and includes a fermata over the final notes.



Sheet music from www.MutopiaProject.org • *Free* to download, with the *freedom* to distribute, modify and perform.

Typeset using www.LilyPond.org by Carl Bolstad. Reference: Mutopia-2006/08/21-421

This sheet music has been placed in the public domain by the typesetter, for details see: <http://creativecommons.org/licenses/publicdomain>