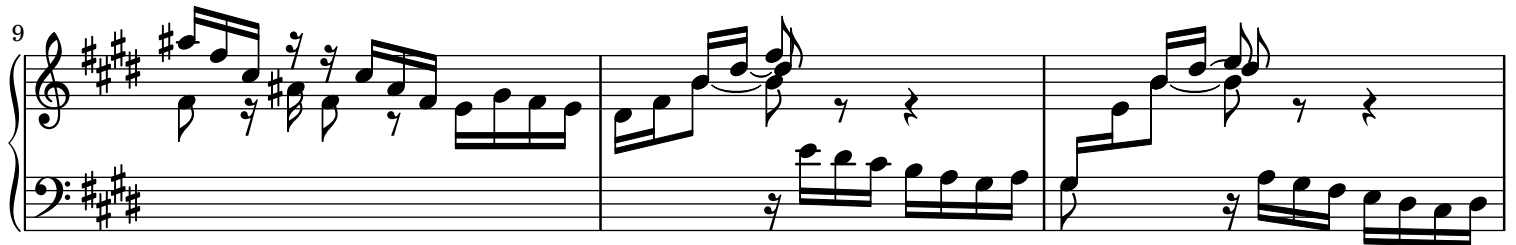
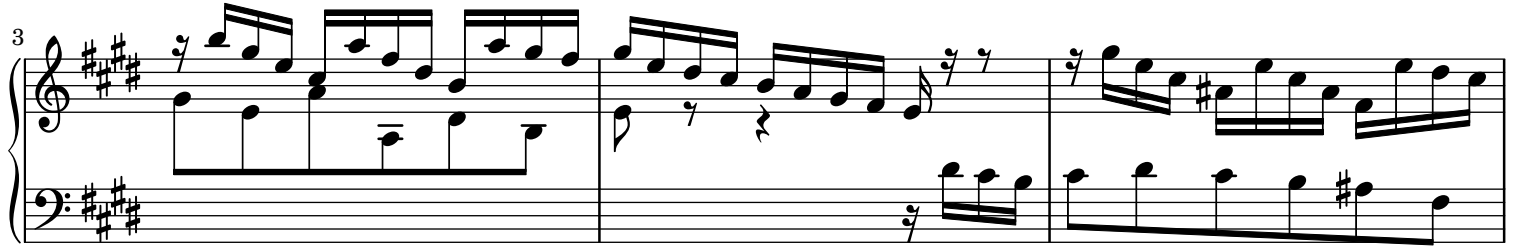
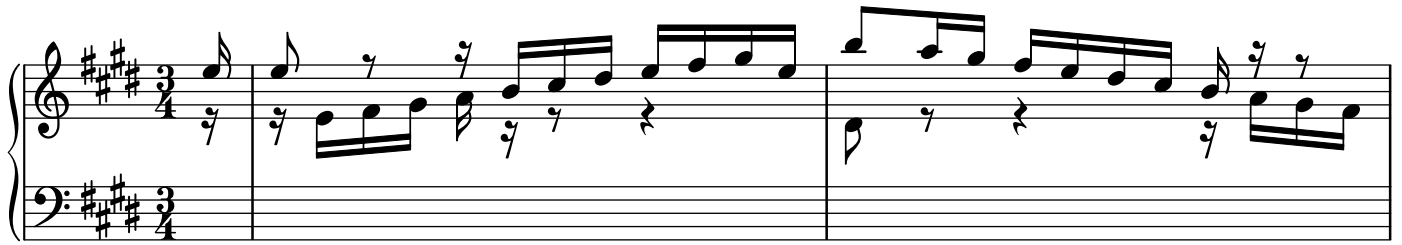


# French Suite VI: Courante

J. S. Bach (1685-1750)

BWV 814



18

Measures 18-20. Treble and bass staves. Key signature: A major (three sharps). Measure 18: Treble staff has a trill on G4, followed by eighth notes A4, B4, C5, D5, E5, F#5, G5. Bass staff has a half note G3, followed by eighth notes A3, B3, C4, D4, E4, F#4, G4. Measure 19: Treble staff has eighth notes A4, B4, C5, D5, E5, F#5, G5. Bass staff has a half note B3, followed by eighth notes A3, G3, F#3, E3, D3, C3, B2. Measure 20: Treble staff has a trill on G4, followed by eighth notes A4, B4, C5, D5, E5, F#5, G5. Bass staff has eighth notes A3, B3, C4, D4, E4, F#4, G4.

21

Measures 21-23. Treble and bass staves. Key signature: A major (three sharps). Measure 21: Treble staff has eighth notes A4, B4, C5, D5, E5, F#5, G5. Bass staff has a half note B3, followed by eighth notes A3, G3, F#3, E3, D3, C3, B2. Measure 22: Treble staff has eighth notes A4, B4, C5, D5, E5, F#5, G5. Bass staff has a half note C#4, followed by eighth notes B3, A3, G3, F#3, E3, D3, C3. Measure 23: Treble staff has eighth notes A4, B4, C5, D5, E5, F#5, G5. Bass staff has a half note D#4, followed by eighth notes C#4, B3, A3, G3, F#3, E3, D3.

24

Measures 24-26. Treble and bass staves. Key signature: A major (three sharps). Measure 24: Treble staff has eighth notes A4, B4, C5, D5, E5, F#5, G5. Bass staff has a half note B3, followed by eighth notes A3, G3, F#3, E3, D3, C3, B2. Measure 25: Treble staff has eighth notes A4, B4, C5, D5, E5, F#5, G5. Bass staff has a half note C#4, followed by eighth notes B3, A3, G3, F#3, E3, D3, C3. Measure 26: Treble staff has eighth notes A4, B4, C5, D5, E5, F#5, G5. Bass staff has a half note D#4, followed by eighth notes C#4, B3, A3, G3, F#3, E3, D3.

27

Measures 27-29. Treble and bass staves. Key signature: A major (three sharps). Measure 27: Treble staff has a trill on G4, followed by eighth notes A4, B4, C5, D5, E5, F#5, G5. Bass staff has eighth notes A3, B3, C4, D4, E4, F#4, G4. Measure 28: Treble staff has eighth notes A4, B4, C5, D5, E5, F#5, G5. Bass staff has a half note B3, followed by eighth notes A3, G3, F#3, E3, D3, C3, B2. Measure 29: Treble staff has eighth notes A4, B4, C5, D5, E5, F#5, G5. Bass staff has a half note C#4, followed by eighth notes B3, A3, G3, F#3, E3, D3, C3.

30

Measures 30-32. Treble and bass staves. Key signature: A major (three sharps). Measure 30: Treble staff has eighth notes A4, B4, C5, D5, E5, F#5, G5. Bass staff has a half note B3, followed by eighth notes A3, G3, F#3, E3, D3, C3, B2. Measure 31: Treble staff has eighth notes A4, B4, C5, D5, E5, F#5, G5. Bass staff has a half note C#4, followed by eighth notes B3, A3, G3, F#3, E3, D3, C3. Measure 32: Treble staff has eighth notes A4, B4, C5, D5, E5, F#5, G5. Bass staff has a half note D#4, followed by eighth notes C#4, B3, A3, G3, F#3, E3, D3.