

J. S. Bach

French Suite III

BWV 814

For Piano or Harpsichord

Transcribed and Engraved

by

Joel Mayes and Knute Snortum

Allemande

J. S. Bach (1685-1750)
BWV 814

The musical score for the Allemande in D major, BWV 814, is presented in a two-staff format. The key signature is D major (two sharps: F# and C#), and the time signature is 2/4. The score begins with a repeat sign in the first measure. The melody is primarily in the treble clef, while the bass line is in the bass clef. The piece is characterized by its simple, elegant style, featuring a mix of eighth and sixteenth notes. The score is divided into measures, with some measures containing repeat signs or dynamic markings like 'p' (piano) and 'f' (forte). The final measure (measure 11) ends with a double bar line and a repeat sign.

13

Measures 13 and 14 of a piano piece in D major. Measure 13 features a treble staff with a dotted quarter note D5, an eighth note E5, a quarter note F#5, and a half note G5, followed by a quarter rest. The bass staff has a quarter rest, an eighth note D4, a quarter note E4, a quarter note F#4, and a half note G4. Measure 14 continues with a treble staff of eighth notes A5, G5, F#5, E5, D5, C#5, B4, and A4, and a bass staff of eighth notes G4, F#4, E4, D4, C#4, B3, A3, and G3. Both staves end with a double bar line.

15

Measures 15 and 16. Measure 15 has a treble staff with a dotted quarter note A5, an eighth note G5, a quarter note F#5, and a half note E5, followed by a quarter rest. The bass staff has a quarter rest, an eighth note D4, a quarter note E4, a quarter note F#4, and a half note G4. Measure 16 continues with a treble staff of eighth notes D5, C#5, B4, A4, G4, F#4, E4, and D4, and a bass staff of eighth notes C#4, B3, A3, G3, F#3, E3, D3, and C3. Both staves end with a double bar line.

17

Measures 17 and 18. Measure 17 has a treble staff with a dotted quarter note D5, an eighth note E5, a quarter note F#5, and a half note G5, followed by a quarter rest. The bass staff has a quarter rest, an eighth note D4, a quarter note E4, a quarter note F#4, and a half note G4. Measure 18 continues with a treble staff of eighth notes A5, G5, F#5, E5, D5, C#5, B4, and A4, and a bass staff of eighth notes G4, F#4, E4, D4, C#4, B3, A3, and G3. Both staves end with a double bar line.

19

Measures 19 and 20. Measure 19 has a treble staff with a dotted quarter note D5, an eighth note E5, a quarter note F#5, and a half note G5, followed by a quarter rest. The bass staff has a quarter rest, an eighth note D4, a quarter note E4, a quarter note F#4, and a half note G4. Measure 20 continues with a treble staff of eighth notes A5, G5, F#5, E5, D5, C#5, B4, and A4, and a bass staff of eighth notes G4, F#4, E4, D4, C#4, B3, A3, and G3. Both staves end with a double bar line.

21

Measures 21 and 22. Measure 21 has a treble staff with a dotted quarter note D5, an eighth note E5, a quarter note F#5, and a half note G5, followed by a quarter rest. The bass staff has a quarter rest, an eighth note D4, a quarter note E4, a quarter note F#4, and a half note G4. Measure 22 continues with a treble staff of eighth notes A5, G5, F#5, E5, D5, C#5, B4, and A4, and a bass staff of eighth notes G4, F#4, E4, D4, C#4, B3, A3, and G3. Both staves end with a double bar line.

23

Measures 23 and 24. Measure 23 has a treble staff with a dotted quarter note D5, an eighth note E5, a quarter note F#5, and a half note G5, followed by a quarter rest. The bass staff has a quarter rest, an eighth note D4, a quarter note E4, a quarter note F#4, and a half note G4. Measure 24 continues with a treble staff of eighth notes A5, G5, F#5, E5, D5, C#5, B4, and A4, and a bass staff of eighth notes G4, F#4, E4, D4, C#4, B3, A3, and G3. Both staves end with a double bar line.

Courante

J. S. Bach (1685-1750)
BWV 814

The musical score for the Courante in D major, BWV 814, is presented in a two-staff format (treble and bass clef). The key signature is two sharps (F# and C#), and the time signature is 3/4. The piece consists of 18 measures, divided into six systems of three measures each. The notation includes various musical symbols such as slurs, trills (tr.), and repeat signs. The melody is primarily in the treble staff, while the bass staff provides a steady accompaniment. The piece concludes with a final cadence in the 18th measure.

18

21

24

26

Sarabande

J. S. Bach (1685-1750)
BWV 814

4

7

10

13

16

19

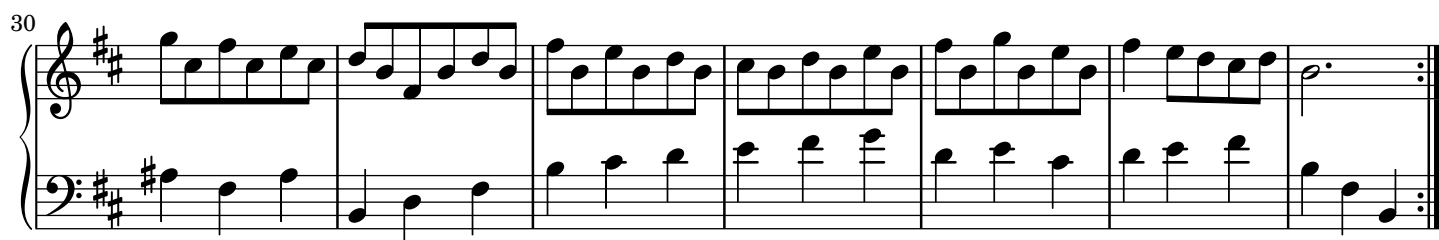
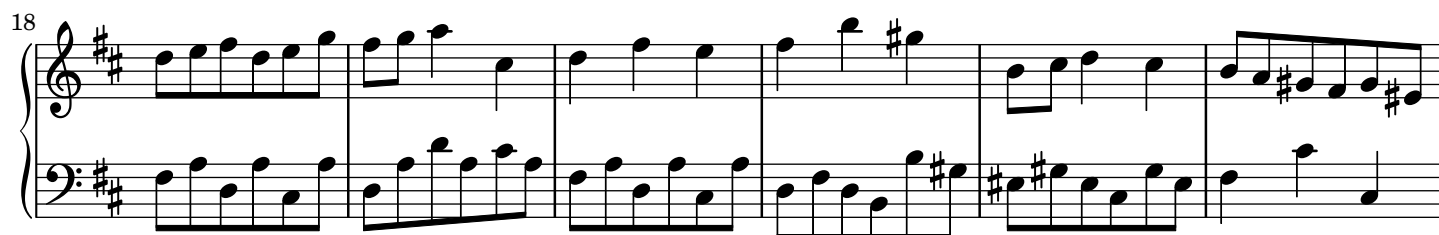
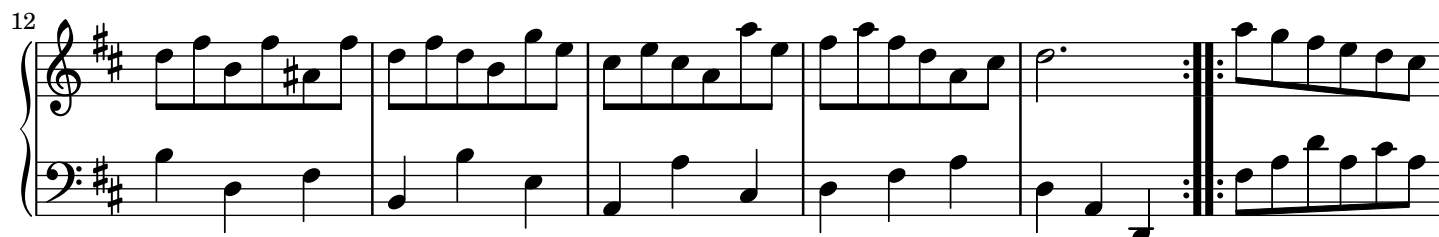
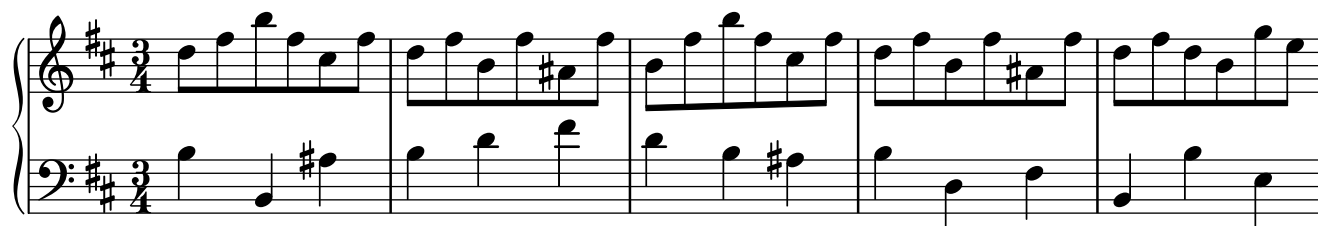
Measures 19-21 of a musical score in D major (two sharps). The treble clef part features a melody with eighth and sixteenth notes, including a triplet in measure 20. The bass clef part provides a harmonic accompaniment with eighth and sixteenth notes. Measure 21 ends with a repeat sign.

22

Measures 22-24 of a musical score in D major. The treble clef part continues the melodic line with eighth and sixteenth notes. The bass clef part features a more active accompaniment with eighth and sixteenth notes. Measure 24 concludes the section with a double bar line and repeat dots.

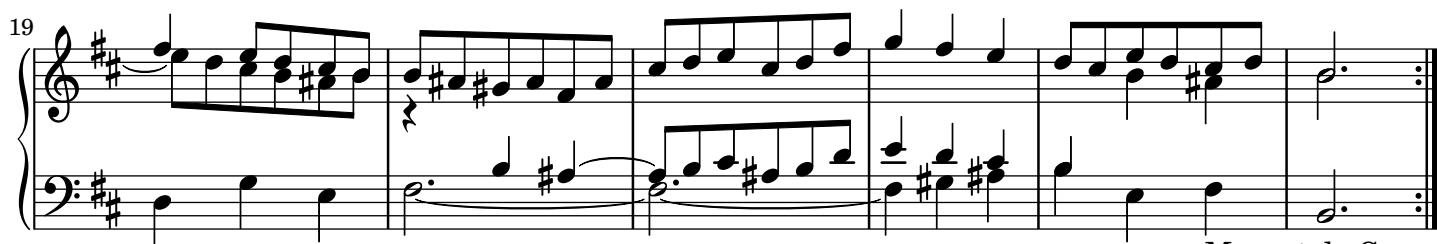
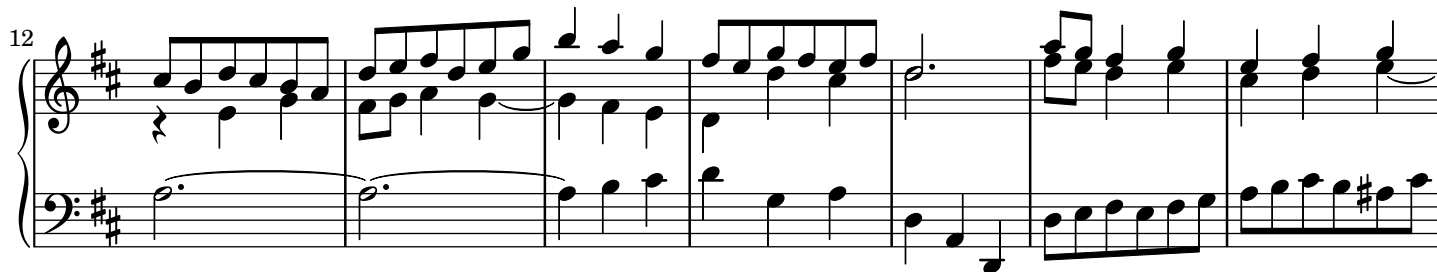
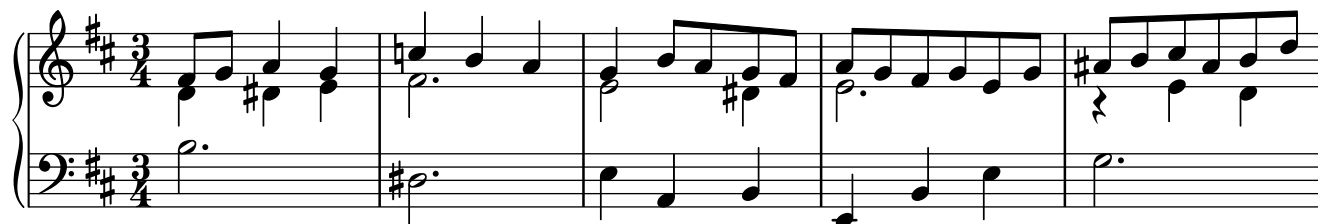
Menuet

J. S. Bach (1685-1750)
BWV 814



Trio

J. S. Bach (1685-1750)
BWV 814



Menuet da Capo.

Anglaise

J. S. Bach (1685-1750)
BWV 814

5

9

13

17

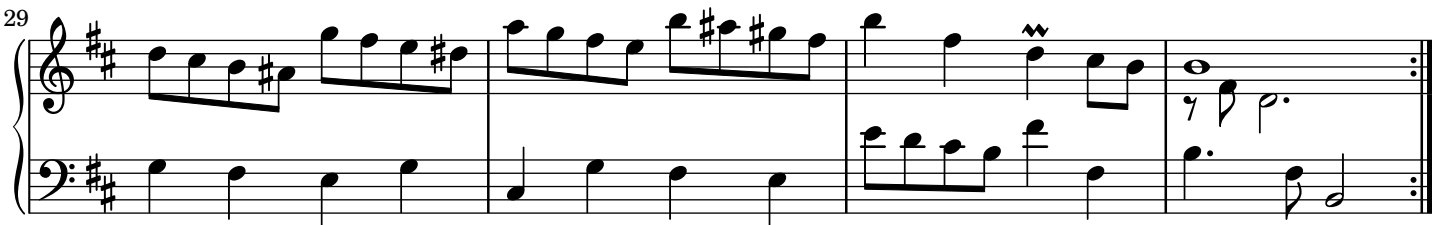
21

10

25



29



Gigue

J. S. Bach (1685-1750)

BWV 814

The musical score for the Gigue in D major, BWV 814, is presented in a standard two-staff format. The key signature is D major (two sharps), and the time signature is 3/8. The piece begins with a treble staff and a bass staff. The first system (measures 1-5) shows the initial melodic and harmonic development. The second system (measures 6-11) continues the melodic flow. The third system (measures 12-17) introduces a new melodic line in the treble. The fourth system (measures 18-22) features a more complex melodic structure. The fifth system (measures 23-27) shows a continuation of the melodic development. The sixth system (measures 28-32) leads to a repeat sign. The seventh system (measures 33-36) concludes the piece with a final melodic flourish.

39

System 1 (measures 39-44) of a piano piece in D major. The right hand features a melodic line with eighth and sixteenth notes, while the left hand provides a steady eighth-note accompaniment. Measure 44 includes a flat accidental for the final note in the bass line.

45

System 2 (measures 45-50). The right hand continues the melodic development with some rests and eighth-note patterns. The left hand maintains the eighth-note accompaniment. Measure 50 shows a key signature change to D minor, indicated by a flat on the F in the bass line.

51

System 3 (measures 51-56). The right hand introduces longer note values, including half notes and a half note with a fermata. The left hand continues the eighth-note accompaniment. Measure 56 ends with a half note and a fermata in the right hand.

57

System 4 (measures 57-62). The right hand features more active sixteenth-note passages. The left hand continues the eighth-note accompaniment. Measure 62 ends with a half note and a fermata in the right hand.

63

System 5 (measures 63-68), the final system on the page. The right hand concludes the piece with a half note and a fermata. The left hand continues the eighth-note accompaniment. Measure 68 ends with a half note and a fermata in the right hand, followed by a double bar line.