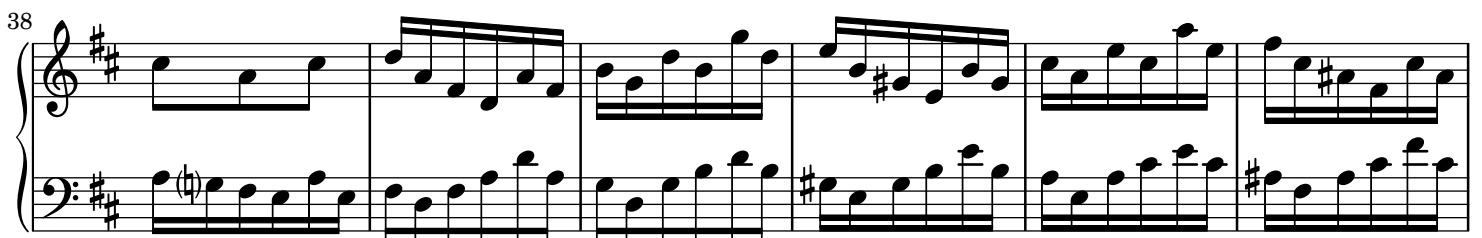
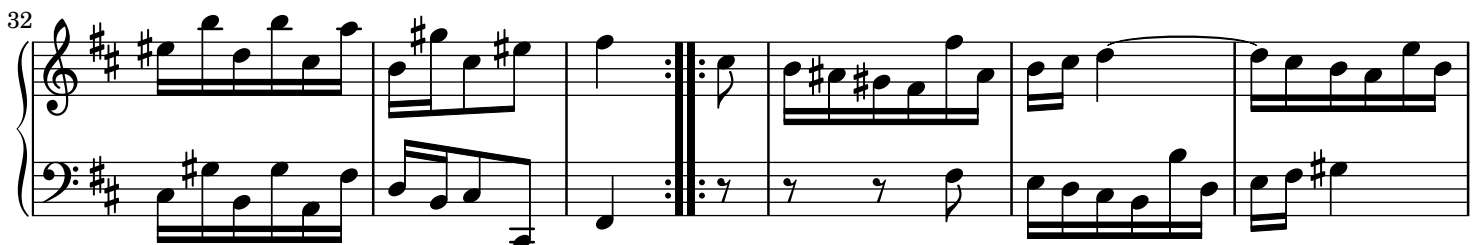
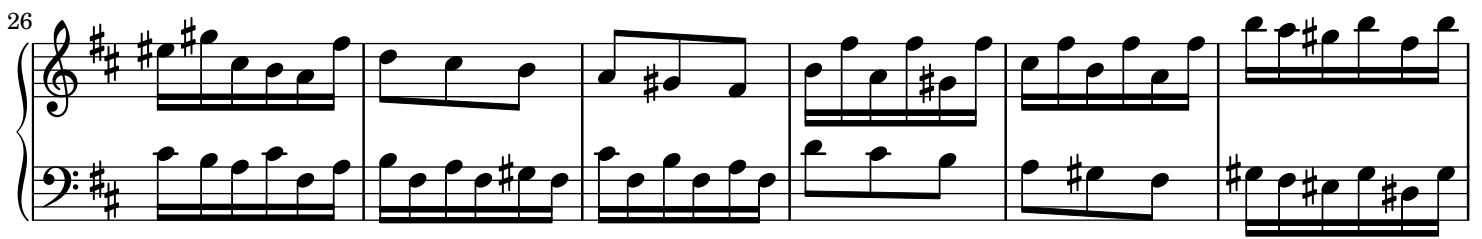
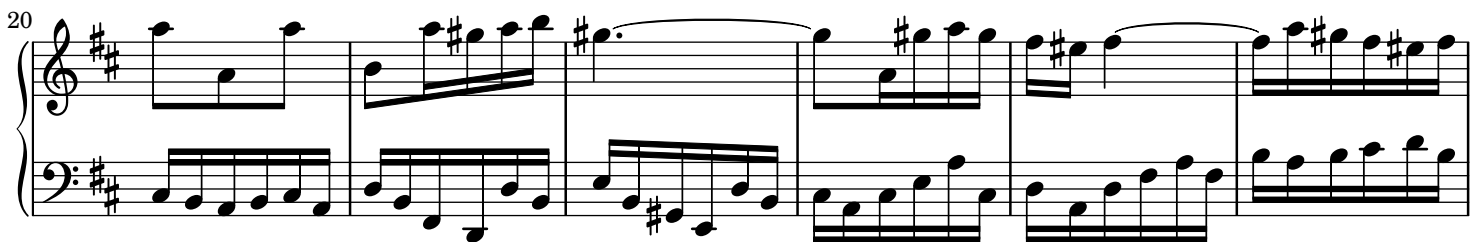
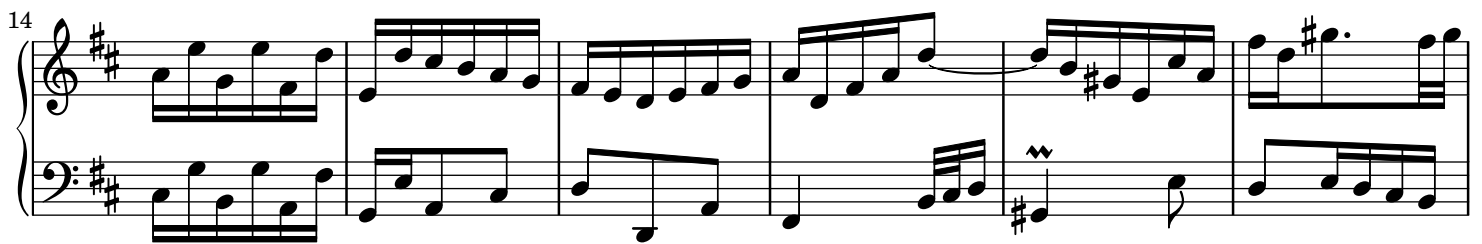


Gigue

J. S. Bach (1685-1750)
BWV 814



44

Measures 44-49 of a musical score in D major (two sharps). The piece is in 2/4 time. Measures 44-45 feature a steady eighth-note accompaniment in the bass and a melody of eighth notes in the treble. Measure 46 has a half-note melody in the treble and a half-note bass line. Measure 47 has a half-note melody in the treble and a half-note bass line. Measure 48 has a half-note melody in the treble and a half-note bass line. Measure 49 has a half-note melody in the treble and a half-note bass line.

50

Measures 50-55 of a musical score in D major. Measures 50-51 feature a steady eighth-note accompaniment in the bass and a melody of eighth notes in the treble. Measure 52 has a half-note melody in the treble and a half-note bass line. Measure 53 has a half-note melody in the treble and a half-note bass line. Measure 54 has a half-note melody in the treble and a half-note bass line. Measure 55 has a half-note melody in the treble and a half-note bass line.

56

Measures 56-61 of a musical score in D major. Measures 56-57 feature a steady eighth-note accompaniment in the bass and a melody of eighth notes in the treble. Measure 58 has a half-note melody in the treble and a half-note bass line. Measure 59 has a half-note melody in the treble and a half-note bass line. Measure 60 has a half-note melody in the treble and a half-note bass line. Measure 61 has a half-note melody in the treble and a half-note bass line.

62

Measures 62-67 of a musical score in D major. Measures 62-63 feature a steady eighth-note accompaniment in the bass and a melody of eighth notes in the treble. Measure 64 has a half-note melody in the treble and a half-note bass line. Measure 65 has a half-note melody in the treble and a half-note bass line. Measure 66 has a half-note melody in the treble and a half-note bass line. Measure 67 has a half-note melody in the treble and a half-note bass line.