

Cello Suite II

"Sechs Suiten für Violoncello"

Johann Sebastian Bach (1685-1750)
BWV 1008

Prélude

The image displays the musical score for the Prelude of the Cello Suite II by Johann Sebastian Bach. The score is written in bass clef with a 3/4 time signature and a key signature of one flat (B-flat). It consists of 34 measures, organized into ten systems of four measures each. The notation includes various rhythmic values such as eighth and sixteenth notes, often beamed together, and rests. Phrasing is indicated by slurs and ties. The piece begins with a half note B-flat, followed by a series of eighth and sixteenth notes, creating a flowing, melodic line. The key signature changes to two flats (B-flat and E-flat) at measure 16. The score concludes with a final half note B-flat.

Musical score for a piece in bass clef, measures 37-57. The score consists of six staves of music. The key signature is one flat (B-flat). The time signature is not explicitly shown but appears to be common time (C). The music features a variety of rhythmic patterns, including eighth and sixteenth notes, often beamed together. There are several slurs and ties throughout the piece. Measure 47 includes a fermata over a note. The piece concludes with a double bar line at the end of measure 57.

Allemande

BWV 1008

Musical score for Allemande in bass clef, measures 1-7. The score consists of four staves of music. The key signature is one flat (B-flat). The time signature is common time (C). The music features a variety of rhythmic patterns, including eighth and sixteenth notes, often beamed together. There are several slurs and ties throughout the piece. Measure 7 includes a trill (tr) over a note. The piece concludes with a double bar line at the end of measure 7.

Musical score for a piece in bass clef, measures 9-23. The key signature has one flat (B-flat). The score consists of seven staves of music. Measure 9 starts with a trill (tr) over a dotted quarter note. The music features a variety of rhythmic patterns, including eighth and sixteenth notes, often beamed together. There are several slurs and ties throughout the piece. Measure 11 includes a repeat sign. Measure 16 has a trill (tr) over a quarter note. Measure 23 ends with a repeat sign.

Courante

BWV 1008

Musical score for Courante BWV 1008 in bass clef, measures 1-14. The key signature has one flat (B-flat) and the time signature is 3/4. The score consists of five staves of music. The piece is characterized by a steady eighth-note accompaniment with a more melodic line on top. Measure 4 has a slur over a group of eighth notes. Measure 11 has a slur over a group of eighth notes. Measure 14 ends with a repeat sign.

20

24

27

30

Sarabande

BWV 1008

5

9

13

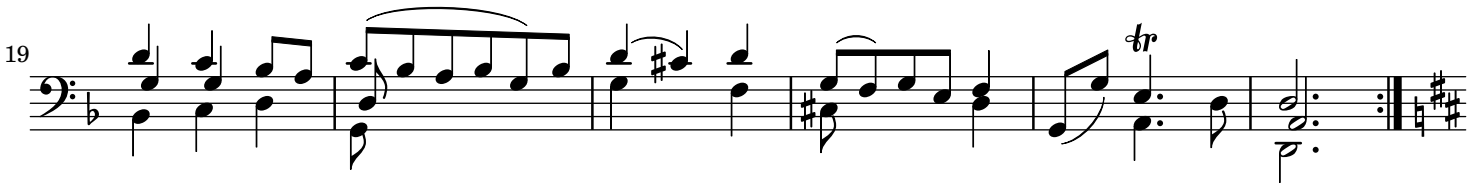
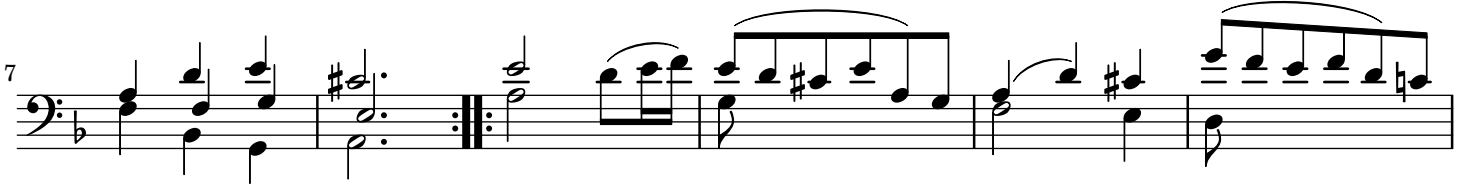
17

21

25

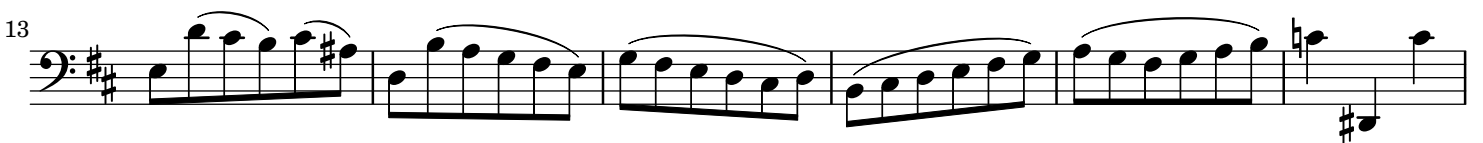
Menuet 1

BWV 1008



Menuet 2

BWV 1008



Menuet I da Capo

6
Gigue

BWV 1008

