

# Hans Sitt

## 100 Etudes, Op. 32

### Book 1

**1** *Andante*

9

18

26

35

43

51

60

Moderato

2

6

12

18

24

31

37

43

49

55

Moderato

3

8

15

22

29

36

43

50

57

64

## Moderato

4

8

15

21

27

33

39

46

53

61





40

44

48

52

56

This section contains the musical notation for measures 40 through 56 of Etude No. 6. The music is written in treble clef with a key signature of one sharp (F#) and a 2/4 time signature. It consists of a continuous sequence of eighth-note patterns, often beamed in groups of four. Measure 40 starts with a natural sign over the first eighth note. Measures 44, 48, and 52 feature a '0' above the first eighth note, indicating a natural sign. The piece concludes at measure 56 with a final chord and a double bar line.

Andante

7

5

9

13

17

This section contains the musical notation for Etude No. 7, starting at measure 7. The tempo is marked 'Andante'. The music is in treble clef with a key signature of one sharp (F#) and a 3/4 time signature. It features a series of slurred eighth-note triplets. The first measure (7) has a '7' above it. Measures 5, 9, 13, and 17 are also indicated. The piece ends at measure 17 with a final chord and a double bar line.

21

25

29

33

37

41

45

49

53

57

61

65



## Moderato

8

*f*

6

11

16

21

26

30

35

40

44

## Moderato

9

6

12

17

23

28

33

38

42

47

52



29

33

37

41

45

49

53

57

61

65

69

73

Moderato

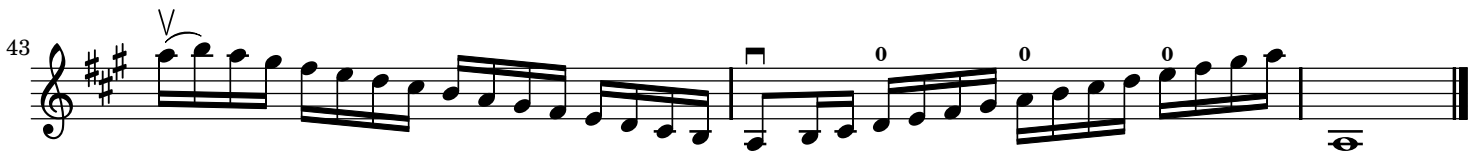
11

31 

34 

37 

40 

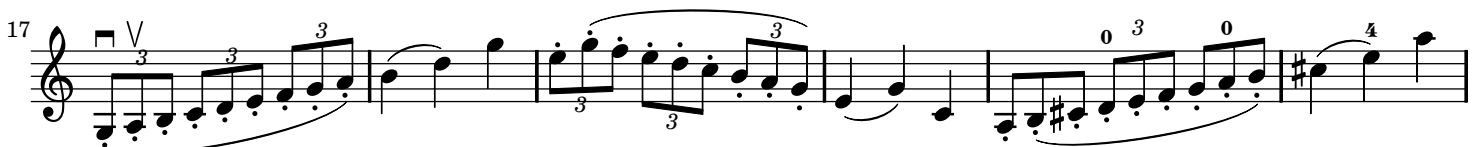
43 

**Allegro moderato**

12 

6 

11 

17 

Musical score for Etude 13, measures 23-57. The score is written in treble clef and contains several measures of music with various fingerings and articulations. Measure numbers 23, 28, 34, 39, 45, 51, and 57 are indicated at the beginning of their respective lines. Fingerings are shown with numbers 0, 3, and 4. Some measures include accents (V) and slurs. The key signature has one sharp (F#).

Musical score for Etude 13, measures 13-7. The score is written in treble clef and contains several measures of music with various fingerings and articulations. Measure numbers 13, 4, and 7 are indicated at the beginning of their respective lines. The tempo is marked *Moderato* and the dynamic is *mf*. Fingerings are shown with numbers 4 and 0. The key signature has one sharp (F#).

10

13

16

19

22

25

28

31

34

37

40

43

46



**Allegro moderato**

14



4



7



10



13



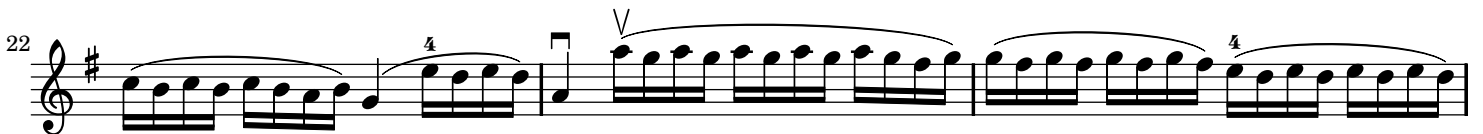
16



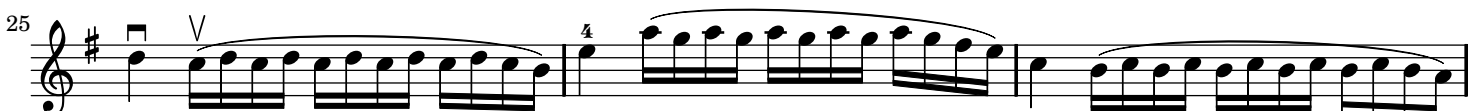
19



22



25



28



31



34 

**15** *Moderato* 

13



Musical staff 13, starting with a treble clef and a key signature of one flat. It features a sequence of notes with various articulations, including slurs and accents. The first measure has a '0' above it, and the second measure has a '4' above it. The staff continues with several measures of music, including a triplet of eighth notes.

16



Musical staff 16, continuing the piece. It features a sequence of notes with various articulations, including slurs and accents. The first measure has a '4' above it, and the second measure has a '4' above it. The staff continues with several measures of music, including a triplet of eighth notes.

19



Musical staff 19, continuing the piece. It features a sequence of notes with various articulations, including slurs and accents. The first measure has a '0' above it, and the second measure has a '0' above it. The staff continues with several measures of music, including a triplet of eighth notes.

22



Musical staff 22, continuing the piece. It features a sequence of notes with various articulations, including slurs and accents. The first measure has a '4' above it, and the second measure has a '4' above it. The staff continues with several measures of music, including a triplet of eighth notes.

25



Musical staff 25, continuing the piece. It features a sequence of notes with various articulations, including slurs and accents. The first measure has a '0' above it, and the second measure has a '0' above it. The staff continues with several measures of music, including a triplet of eighth notes.

28



Musical staff 28, continuing the piece. It features a sequence of notes with various articulations, including slurs and accents. The first measure has a '4' above it, and the second measure has a '4' above it. The staff continues with several measures of music, including a triplet of eighth notes.

31



Musical staff 31, continuing the piece. It features a sequence of notes with various articulations, including slurs and accents. The first measure has a '4' above it, and the second measure has a '4' above it. The staff continues with several measures of music, including a triplet of eighth notes.

34



Musical staff 34, continuing the piece. It features a sequence of notes with various articulations, including slurs and accents. The first measure has a '4' above it, and the second measure has a '0' above it. The staff continues with several measures of music, including a triplet of eighth notes.

37

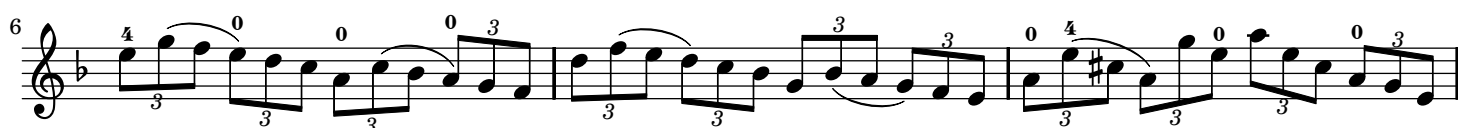
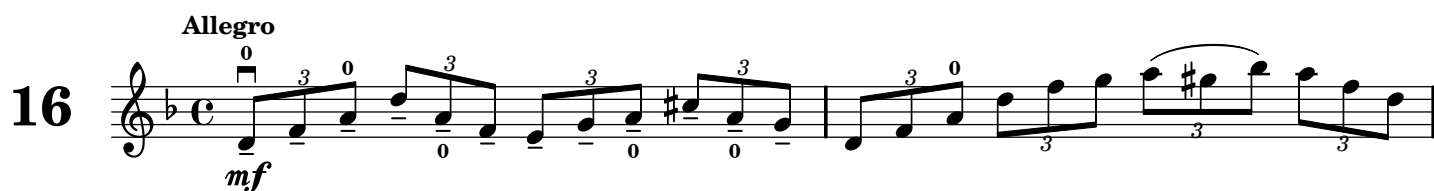


Musical staff 37, continuing the piece. It features a sequence of notes with various articulations, including slurs and accents. The first measure has a '0' above it, and the second measure has a '4' above it. The staff continues with several measures of music, including a triplet of eighth notes.

41



Musical staff 41, continuing the piece. It features a sequence of notes with various articulations, including slurs and accents. The first measure has a '4' above it, and the second measure has a '4' above it. The staff continues with several measures of music, including a triplet of eighth notes.



18

21

24

27

30

33

36

39

42

45

48

**17** *Allegro*  
*mf*

5

9

13

17

21

25

29

33

Musical score for guitar, measures 37-73. The score is written in treble clef with a key signature of three sharps (F#, C#, G#). The music consists of ten staves, each containing five measures. The notation includes various rhythmic patterns, such as eighth and sixteenth notes, and rests. Fingerings are indicated by numbers 1-4 above notes. The piece concludes with a double bar line and a final chord.

18 *Moderato*

The musical score for Etude 18 is written in treble clef, D major (two sharps), and 4/4 time. The tempo is marked *Moderato*. The piece consists of ten staves of music, numbered 1 through 19. The notation includes eighth notes, quarter notes, and half notes, often grouped in pairs or fours. Fingering is indicated by numbers 1-4 and 0 (open string). Slurs and accents are used to indicate phrasing and dynamics. The piece concludes with a final cadence on the 19th staff.



21

**19** *Moderato assai*

The musical score for Etude 19 is written in G major (one sharp) and 3/4 time. It consists of 11 staves of music, each containing three measures. The tempo is marked *Moderato assai*. The piece features a continuous eighth-note pattern throughout. The first staff begins with a treble clef, a key signature of one sharp (F#), and a 3/4 time signature. The music is characterized by a steady eighth-note flow, with various phrasing slurs and fingering markings (such as '4' and '0') indicating specific techniques. The piece concludes on the 31st measure of the 11th staff.

This page contains ten staves of musical notation for guitar, numbered 34 through 64. The music is written in treble clef with a key signature of one sharp (F#). The notation includes various rhythmic patterns, often with slurs and accents. Fingerings are indicated by numbers 1-4 and 0 (open string). The piece concludes with a double bar line at measure 64.



Musical score for guitar, measures 28-52. The score is written in treble clef with a key signature of two sharps (F# and C#). The music consists of a single melodic line with various rhythmic patterns and fingerings. Measure numbers 28, 31, 34, 37, 40, 43, 46, 49, and 52 are indicated at the beginning of their respective staves. Fingerings are indicated by numbers 0, 1, 2, 3, and 4 above the notes. The piece concludes with a double bar line at measure 52.