

Cello  
**Eine Kleine Nachtmusik**  
— I. Allegro —

W.A. Mozart  
K525

Allegro

Cello

6

11

19

25

30

36

42

48

53

*(f)*

*p*

*sfz*

*cresc.*

*p*

*f*

*p*

*f*

*p*

*f*

## Cello

2

59



67



76



82



89



96



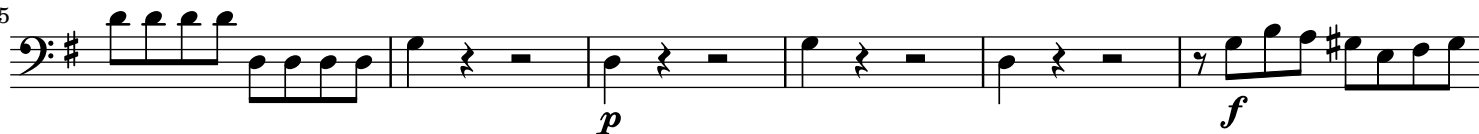
103



109



115



121



126



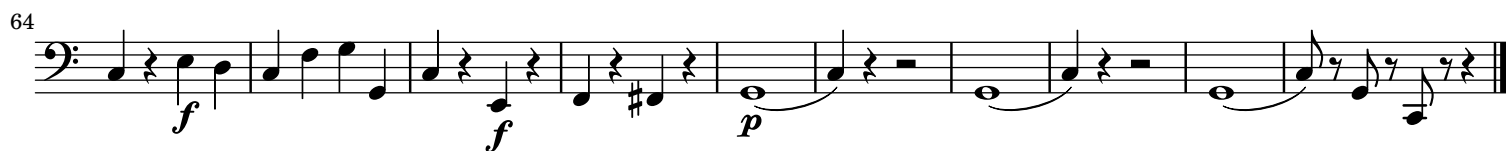
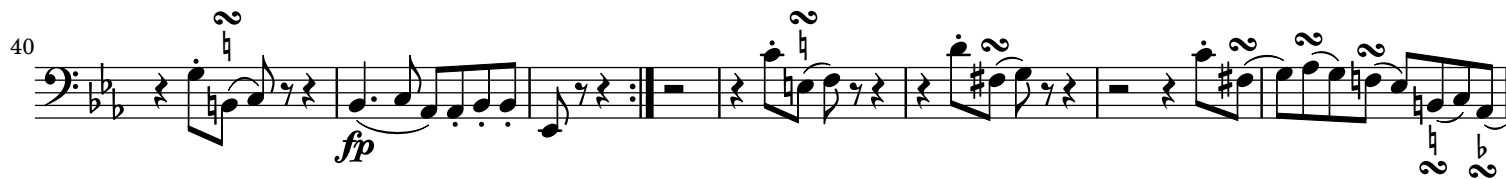
133



Cello  
**Eine Kleine Nachtmusik**  
 — II. Romanze —

W.A. Mozart  
 K525

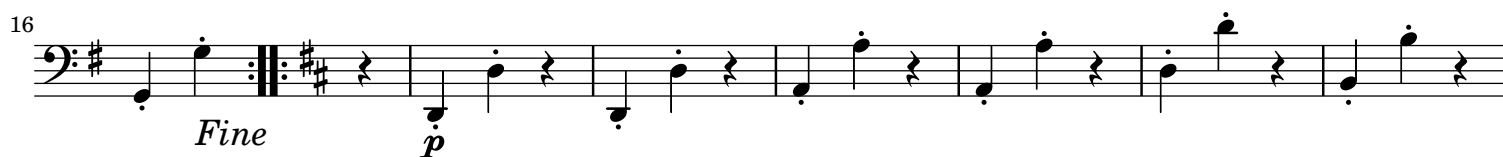
Andante



Cello  
**Eine Kleine Nachtmusik**  
 — III. Menuetto —

W.A. Mozart  
 K525

Allegretto



*Menuetto da capo*

Cello  
**Eine Kleine Nachtmusik**  
 — IV. Rondo —

W.A. Mozart  
 K525

Allegro

Cello

8 **1** **2**  
*f*

15 *fp*

24

30

40 *f*

49 *f*

57 *p* *f*

66

## Cello

6

73

81

90

97

107

116

124

134

142

150

157

This musical score for Cello covers measures 73 to 157 of a piece. The key signature is one sharp (F#). The score is written on a single staff in bass clef. It begins with measure 73, which contains a series of eighth notes. Measure 81 features a dynamic marking of *fp* (fortissimo piano) and includes a fermata. Measure 90 shows a series of eighth notes. Measure 97 contains a half note and a quarter note. Measure 107 features a dynamic marking of *f* (fortissimo) and includes a fermata. Measure 116 shows a dynamic marking of *p* (piano) and includes a fermata. Measure 124 features a dynamic marking of *f* (fortissimo) and includes a fermata. Measure 134 contains a half note and a quarter note. Measure 142 features a dynamic marking of *f* (fortissimo) and includes a fermata. Measure 150 shows a series of eighth notes. Measure 157 ends with a double bar line.