

Horn Concerto in E \flat Major, K.447

Bass

Wolfgang Amadeus Mozart (1756-1791)

Allegro (♩ = 112)

6 *p*

13 *p* *cresc.* - - - -

18 *f*

23 **A** *p*

30 2 *p*

38

45 **B** 4

56

62 *f* *p* *cresc.* - - -

68 **C** *f*

73

78 **D** *p* *p*

87

94

100

105

110

116

120

128

135

145

150

156

162

167

172

E

F

G

H

f

p

cresc.

67



72



Allegro (♩. = 112)

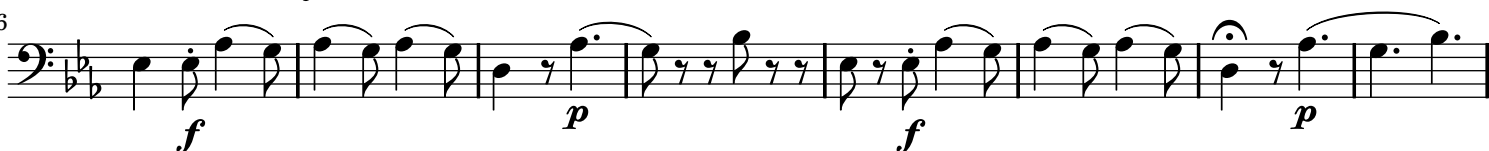
Rondo



8



16



24



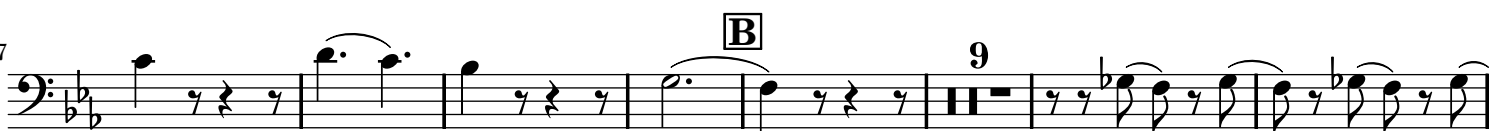
31



39



47



63



71



79



87



95 **D**

102

110

118 **E**

127

141

149 **F**

157

165 **G**

176 **H**

186

194

202