

[II. Andantino]

Arpa sola

Measures 12-15 of the Arpa sola section. The music is in 3/4 time, key of B-flat major. Measure 12 has a repeat sign and a fermata. Measures 13-15 feature a series of chords and a melodic line in the right hand, with a piano (p) dynamic marking.

16

Measures 16-18. Measure 16 has a fermata. Measures 17-18 feature a series of chords and a melodic line in the right hand, with a forte (f) dynamic marking.

19

Measures 19-25. Measures 19-24 feature a series of chords and a melodic line in the right hand, with a forte (f) dynamic marking. Measure 25 has a 4-measure rest in the right hand and a 4-measure rest in the left hand.

26

Measures 26-28. Measures 26-28 feature a series of chords and a melodic line in the right hand, with a forte (f) dynamic marking.

29

Measures 29-36. Measures 29-35 feature a series of chords and a melodic line in the right hand, with a forte (f) dynamic marking. Measure 36 has a 4-measure rest in the right hand and a 4-measure rest in the left hand.

37

Measures 37-40. Measures 37-39 feature a series of chords and a melodic line in the right hand, with a forte (f) dynamic marking. Measure 40 has a 3-measure rest in the right hand and a 3-measure rest in the left hand.

44

44 45 46 47 48 49

50

50 51 52

53

53 54 55

56

56 57 58 59

60

60 61 62

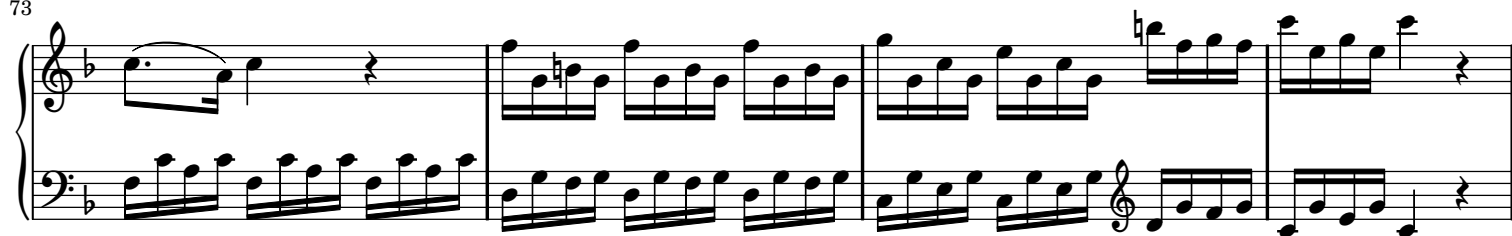
63

63 64 65

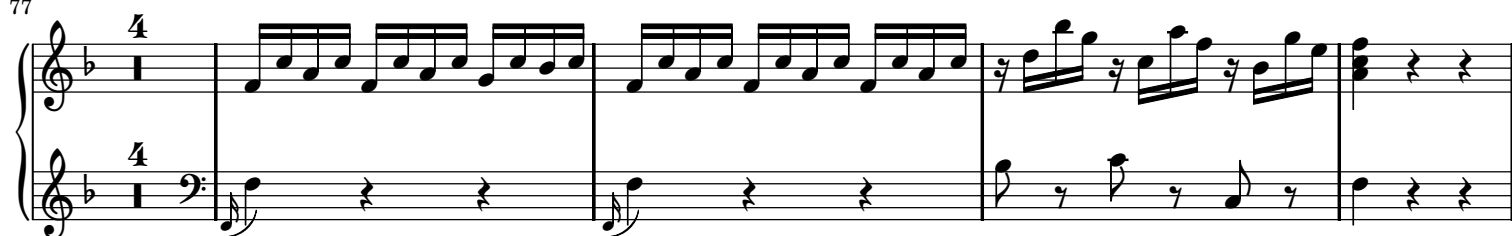
66



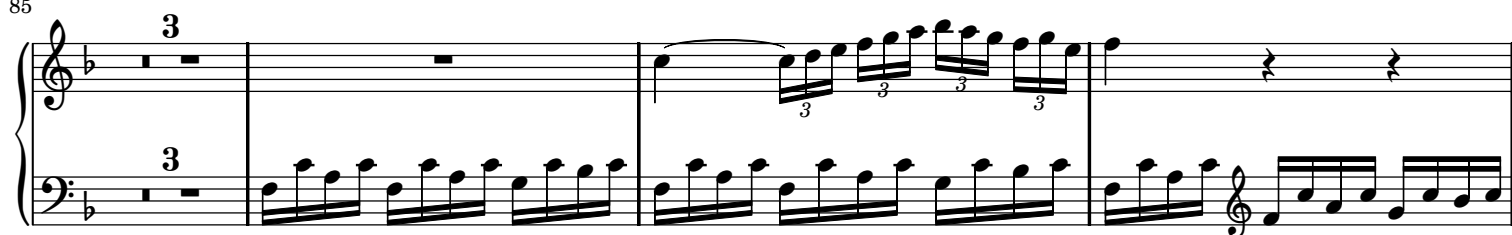
73



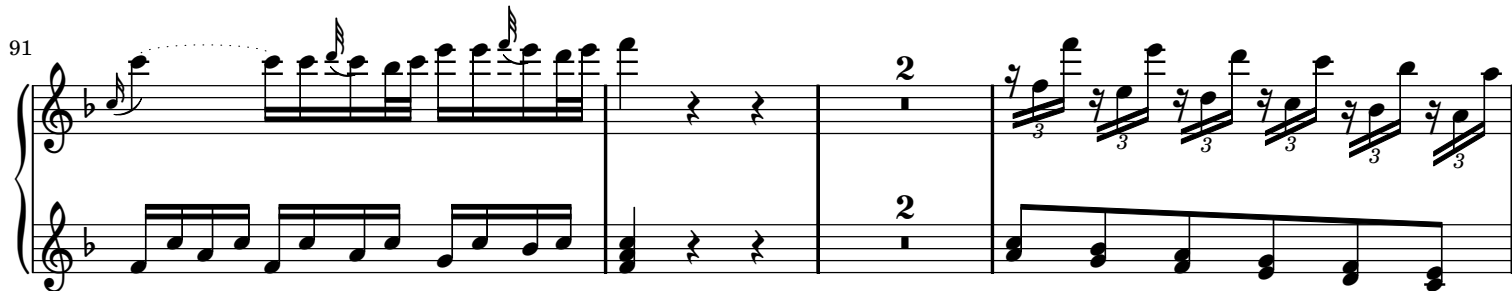
77



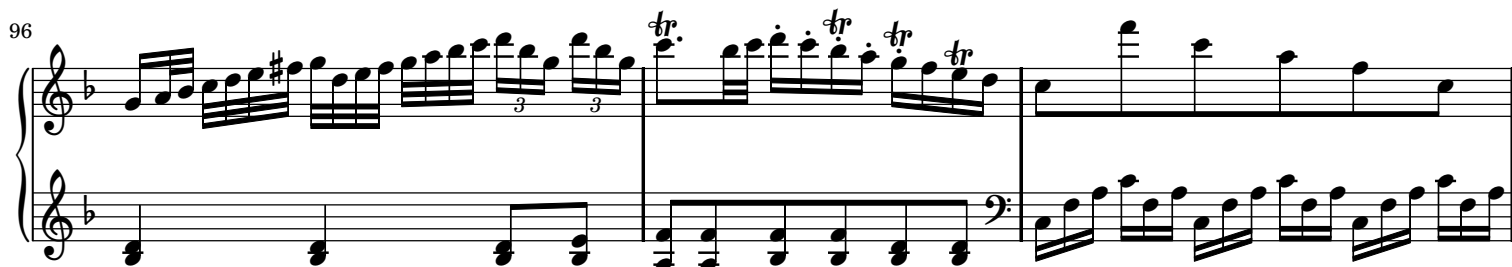
85



91



96



99

104

110

115