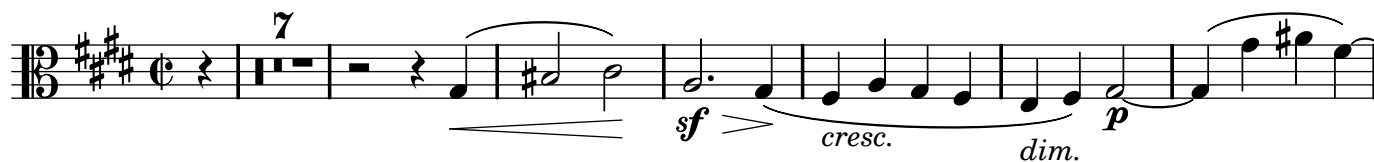


# Quartet N° 14

in C Sharp Minor

L. van Beethoven (1770 - 1827)

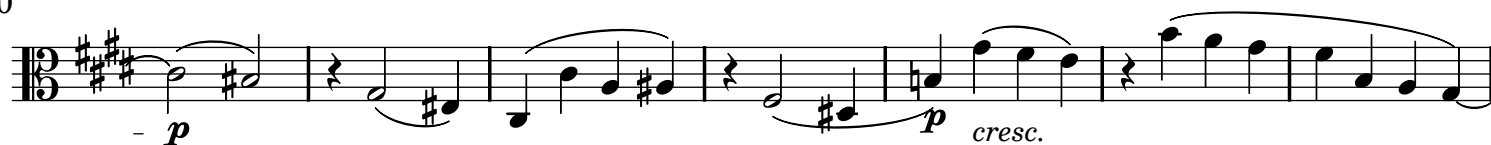
**No. 1.**  
Adagio, ma non troppo e molto espressivo.



14



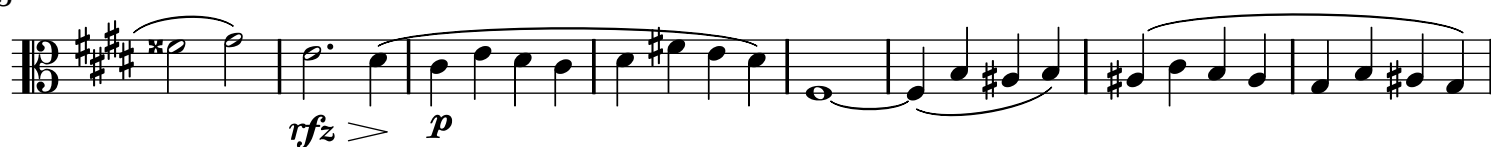
20



27



35



43



49



55



60



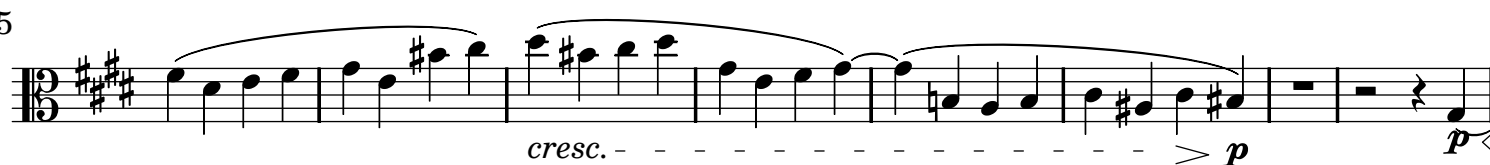
66



78



85



93



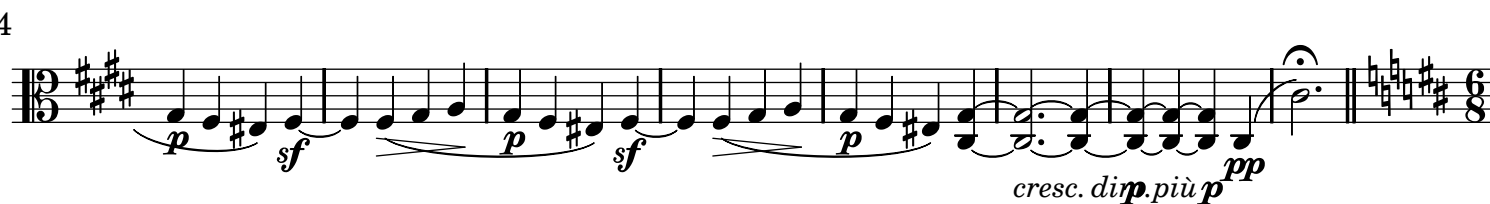
100



106



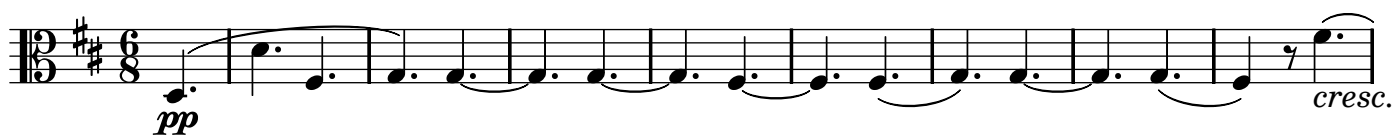
114

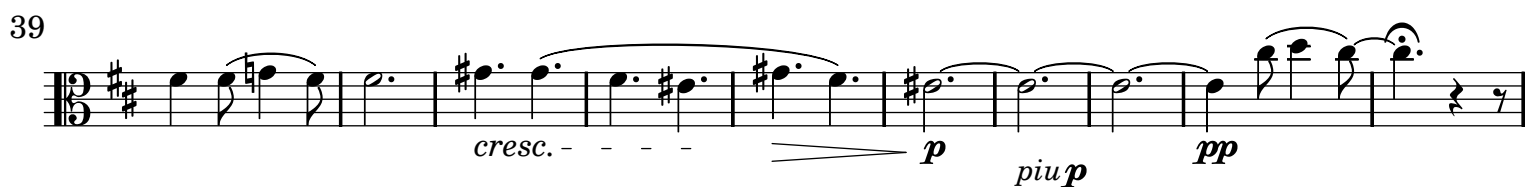
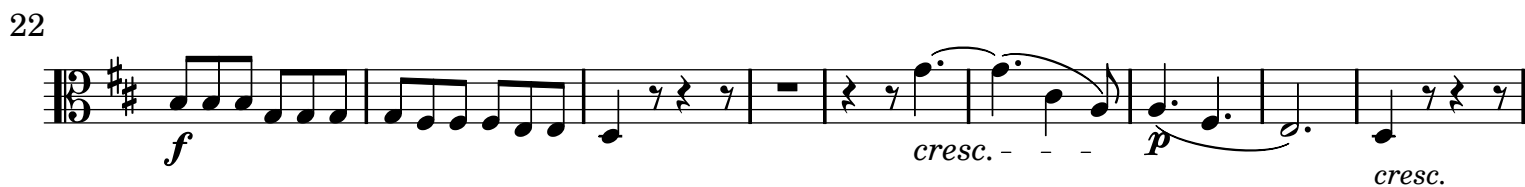
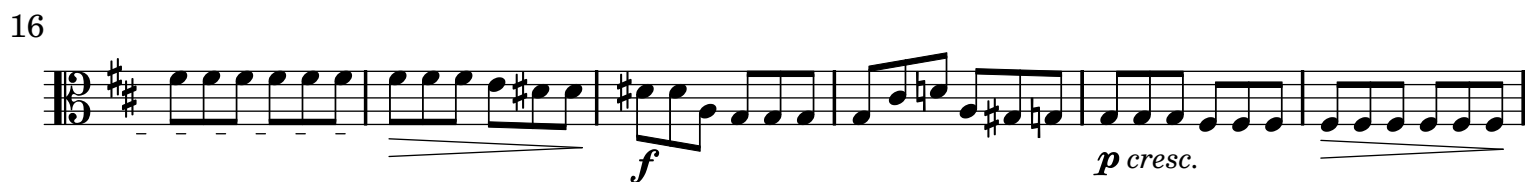
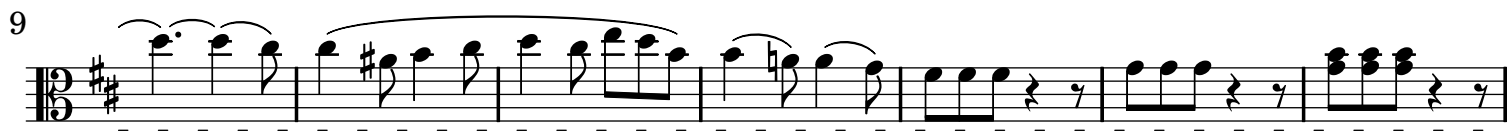


## No. 2

Allegro molto vivace.

un poco in tempo





80 un poco *rit* tempo

80-87: Musical staff in 3/8 time, key of D major. It begins with a crescendo (cresc.) and a piano (pp) dynamic. The tempo marking 'un poco rit tempo' is above the staff. The music features eighth and quarter notes with slurs and a dynamic change to piano (p) at measure 86.

88

88-94: Musical staff in 3/8 time, key of D major. It begins with a crescendo (cresc.) and features a piano (p) dynamic. The music includes eighth and quarter notes with slurs.

95 un poco *rit* tempo

95-100: Musical staff in 3/8 time, key of D major. It begins with a crescendo (cresc.) and a forte (f) dynamic. The tempo marking 'un poco rit tempo' is above the staff. The music features eighth and quarter notes with slurs and a dynamic change to piano (p) at measure 99, followed by a crescendo (cresc.).

101

101-106: Musical staff in 3/8 time, key of D major. It begins with a forte (f) dynamic and a piano (p) dynamic. The music features eighth and quarter notes with slurs and a dynamic change to piano (p) at measure 104, followed by a crescendo (cresc.).

107

107-114: Musical staff in 3/8 time, key of D major. It begins with a piano (p) dynamic and a crescendo (cresc.) leading to a forte (f) dynamic. The music features eighth and quarter notes with slurs and a dynamic change to piano (p) at measure 113, followed by a piano (p) dynamic.

115

115-124: Musical staff in 3/8 time, key of D major. It begins with a piano (p) dynamic and a crescendo (cresc.) leading to a forte (f) dynamic. The music features eighth and quarter notes with slurs and a dynamic change to piano (p) at measure 123, followed by a piano (p) dynamic.

125

125-133: Musical staff in 3/8 time, key of D major. It begins with a piano (p) dynamic and a crescendo (cresc.) leading to a forte (f) dynamic. The music features eighth and quarter notes with slurs and a dynamic change to piano (p) at measure 132, followed by a piano (p) dynamic.

134

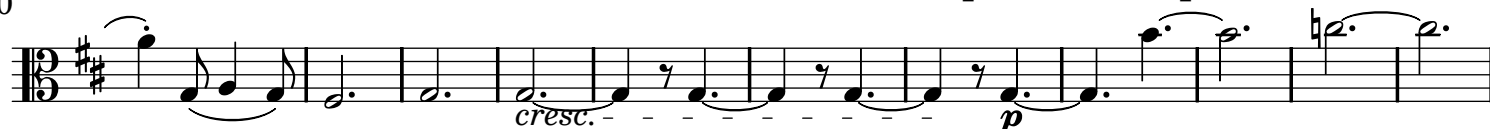
134-141: Musical staff in 3/8 time, key of D major. It begins with a piano (p) dynamic and a crescendo (cresc.) leading to a forte (f) dynamic. The music features eighth and quarter notes with slurs and a dynamic change to piano (p) at measure 140, followed by a piano (p) dynamic.

142

142-149: Musical staff in 3/8 time, key of D major. It begins with a piano (p) dynamic and a crescendo (cresc.) leading to a forte (f) dynamic. The music features eighth and quarter notes with slurs and a dynamic change to piano (p) at measure 148, followed by a piano (p) dynamic.

un poco ~~rit.~~ tempo

150



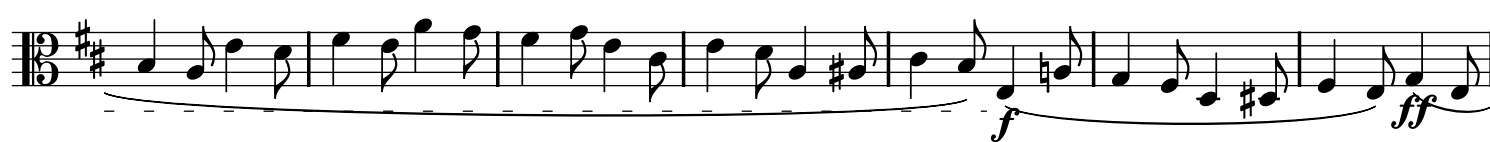
161



168



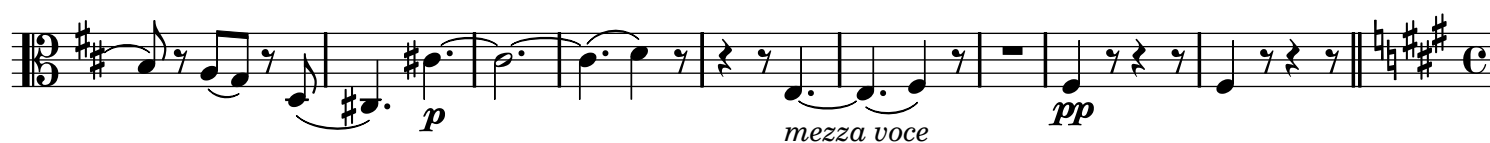
176



183



190



### No. 3

Allegro moderato.

Adagio.



7



### No. 4

Andante, ma non troppo e molto cantabile.



12



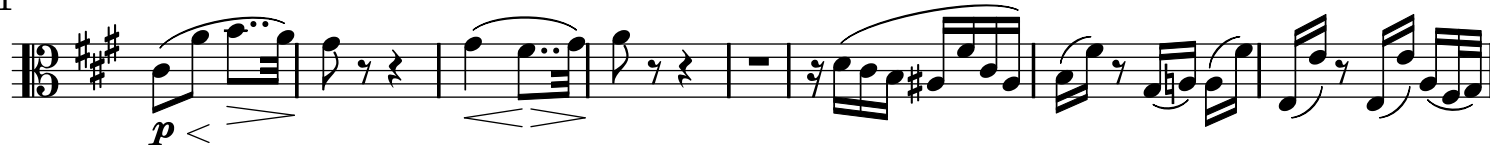
23



32



41



49



55



61



Più mosso.

66



71



76



81



86



91



Andante moderato  
e lusinghiero.

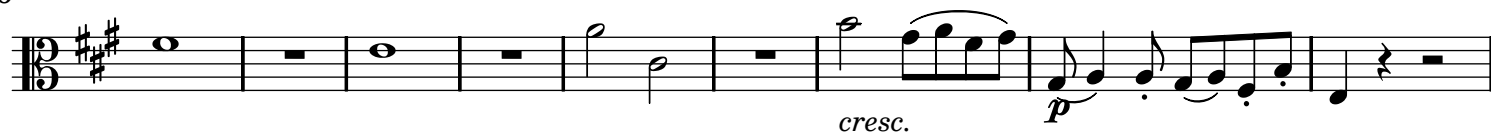
96



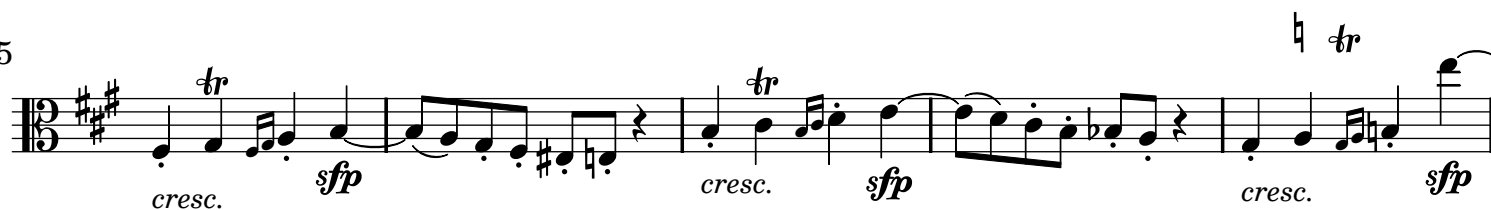
101



106



115



120

120

*cresc.* *sfp* *cresc.* *p* *cresc.* *sfp*

125

*cresc.* *sfp* *cresc.* *sf p* *cresc.*

125

125

*cresc.* *sfp* *cresc.* *sf p* *cresc.*

130

*sfp* *cresc.* *p*

130

130

*sfp* *cresc.* *p*

136

*pizz.* *arco* *pizz.* *arco*

136

136

*pizz.* *arco* *pizz.* *arco*

140

*p* *cresc.*

140

140

*p* *cresc.*

144

*p* *cresc.* *dim.* *p*

144

144

*p* *cresc.* *dim.* *p*

148

*p* *cresc.* *dim.* *p*

148

148

*p* *cresc.* *dim.* *p*

152

*p* *cresc.* *dim.* *p* *sf* *p dol.*

152

152

*p* *cresc.* *dim.* *p* *sf* *p dol.*

*pizz. Allegretto.* *arco*

3



159



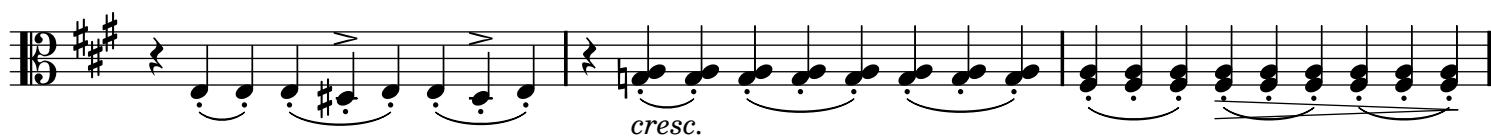
169



179



183



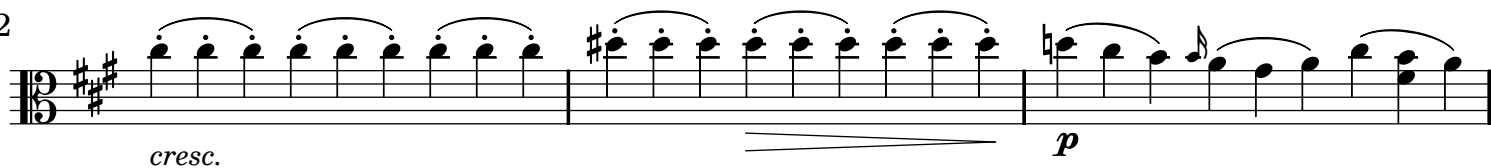
186



189



192



195



201

204

207

210

213

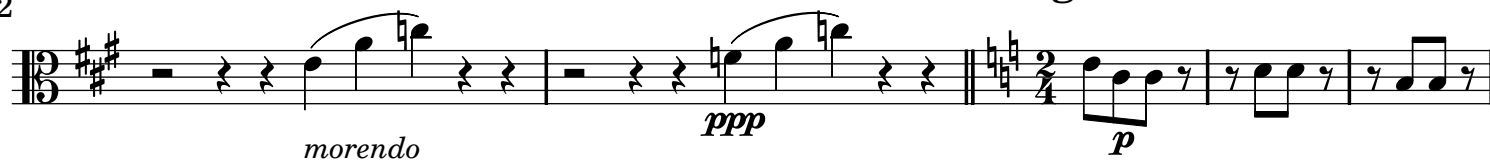
216

219

[illegible]

## Allegretto.

222



227

sempre più allegro

dim. e ritard. in tempo



237



244

## Allegretto.



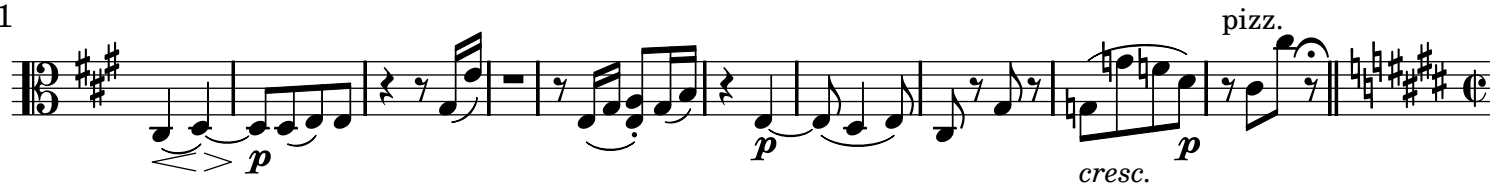
250

sempre più allegro

dim. e in tempo



261

No. 5  
Presto.

9



12

16



23



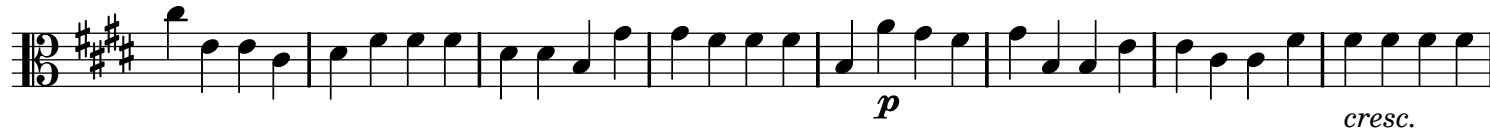
35



43



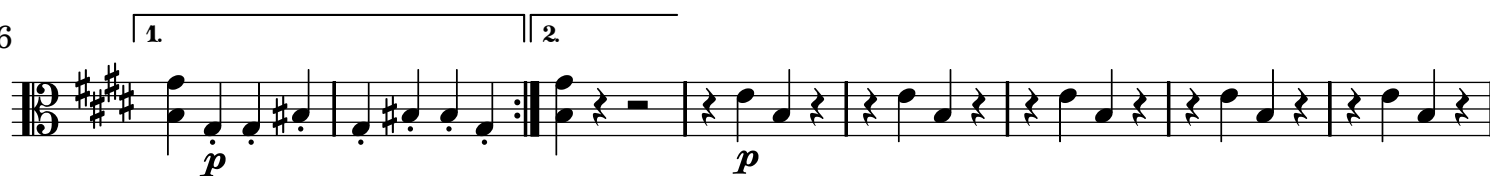
50



58



66



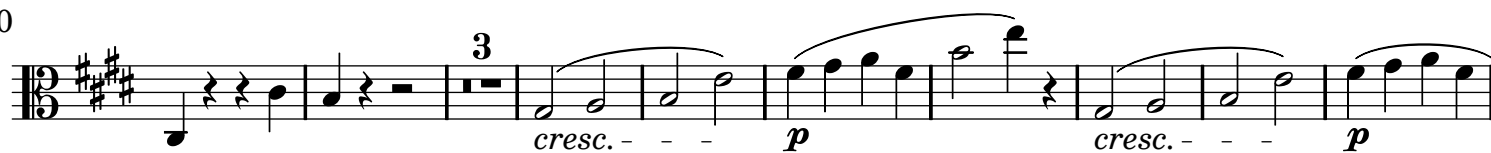
74



82



90

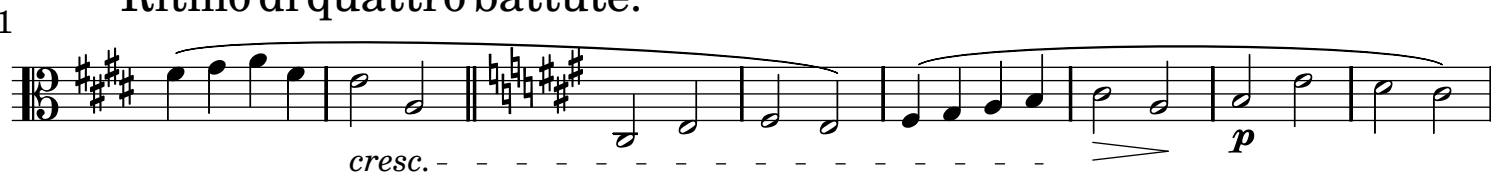


102



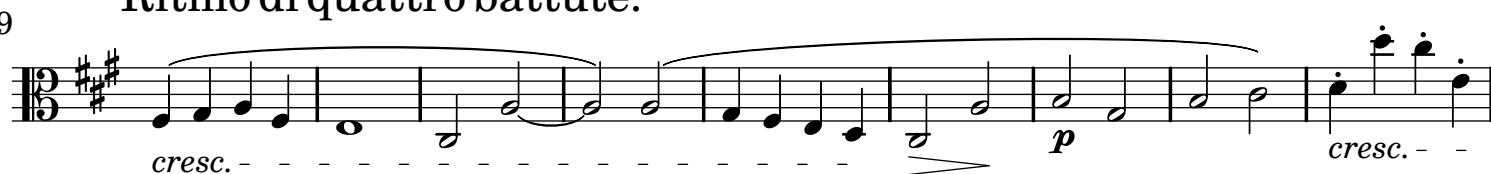
Ritmo di quattro battute.

111



Ritmo di quattro battute.

119



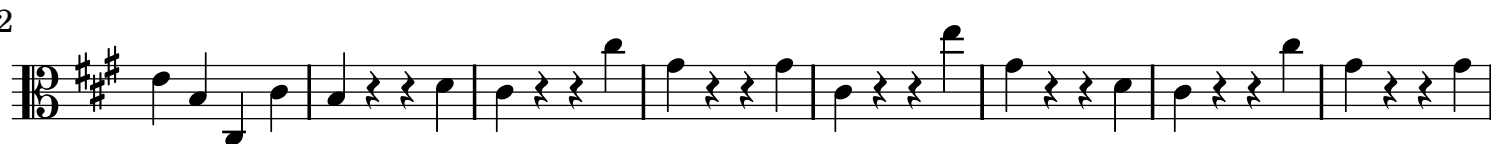
128



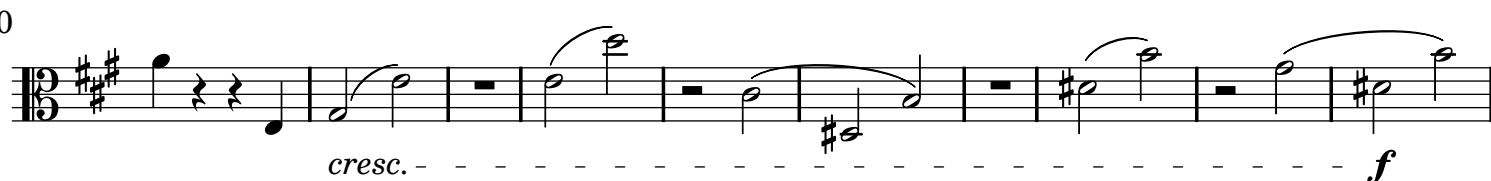
135



142



150



160



14

172



179



186



Molto poco  
adagio.

193

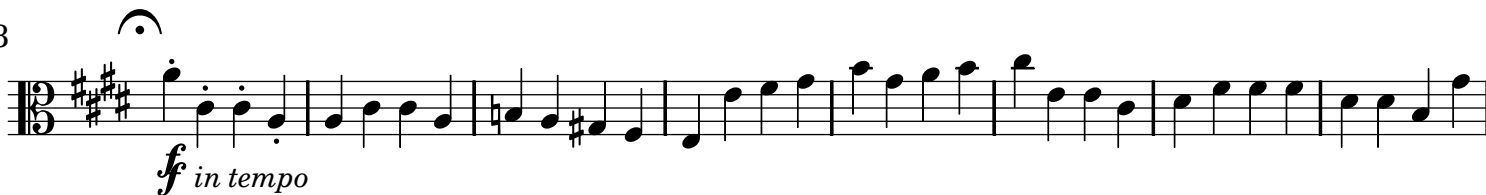


Tempo I.

205



213



221



229



237



245



252

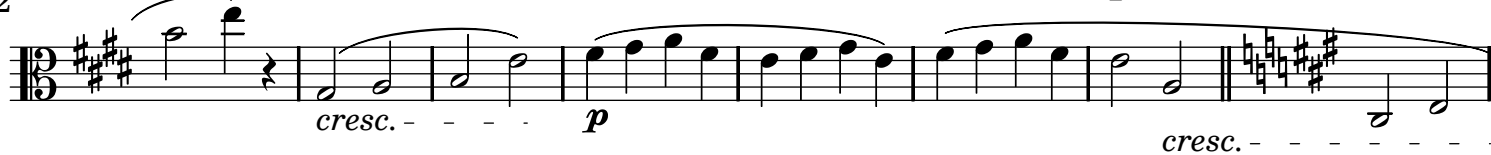


263



272

Ritmo di quattro battute.



280

Ritmo di quattro battute.



289



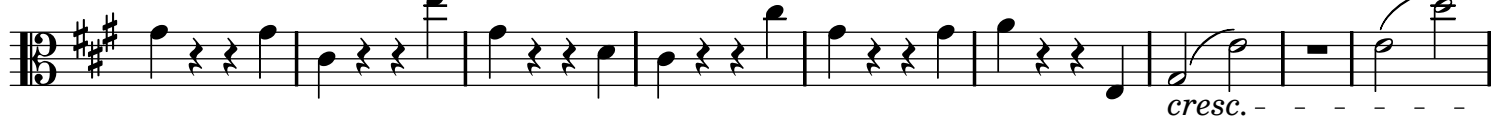
297



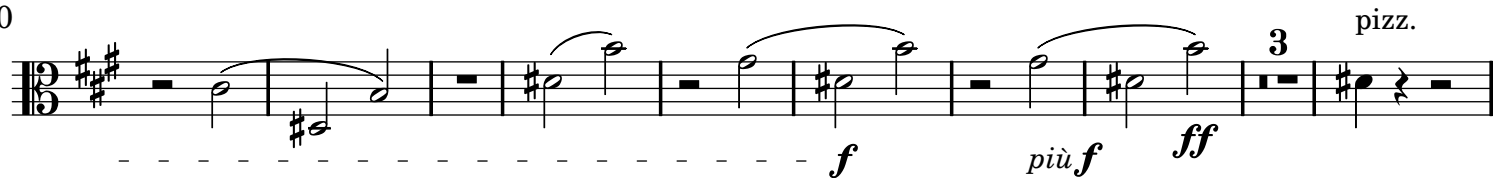
304



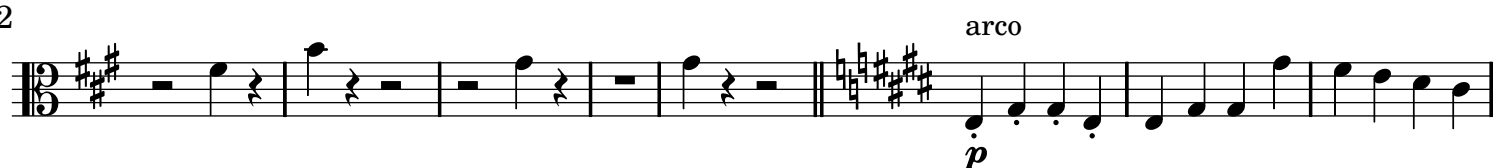
311



320



332



340



347



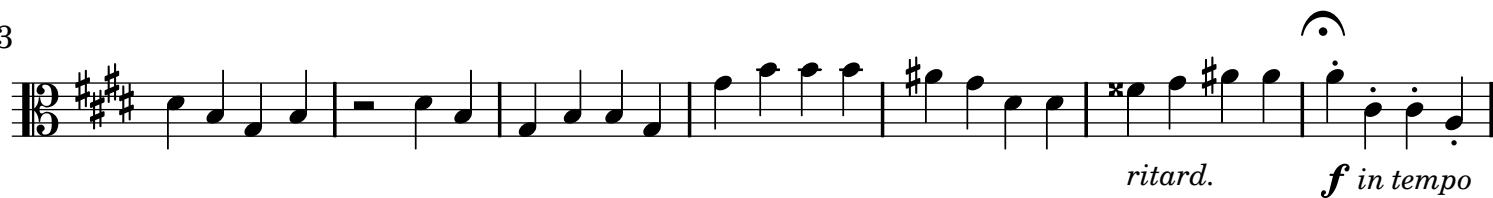
354



363



373



380



387





394



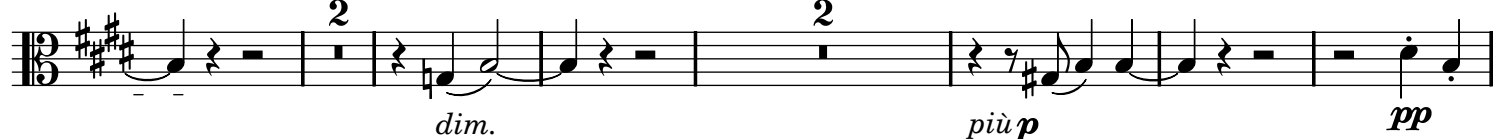
401



Molto poco  
adagio.

Tempo I.

410



420



428



436



444



452

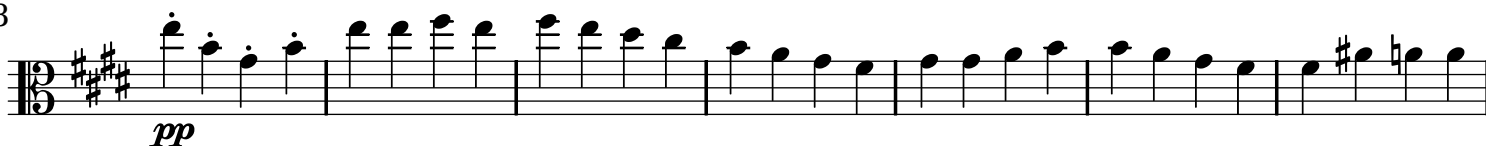


463

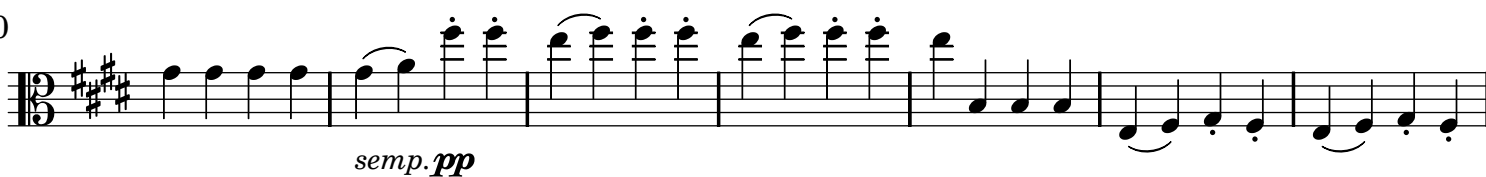


sul ponticello

473



480



487



494

**No. 6**

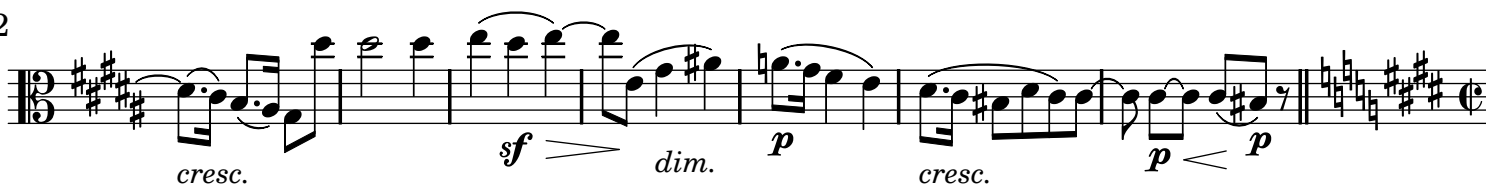
Adagio quasi un poco andante.



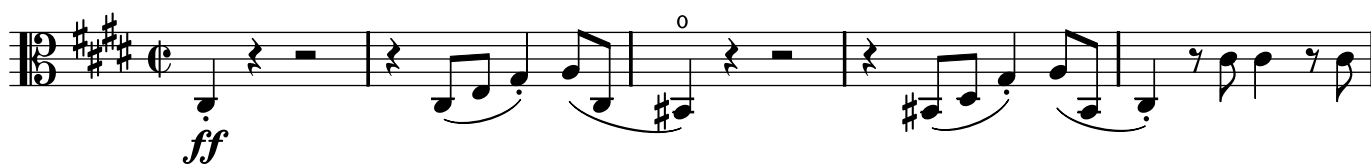
11



22

**No. 7**

Allegro.



6



11



16



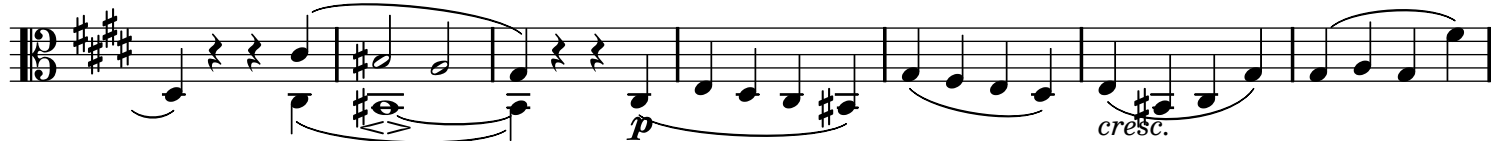
22



27



33



40



46



51



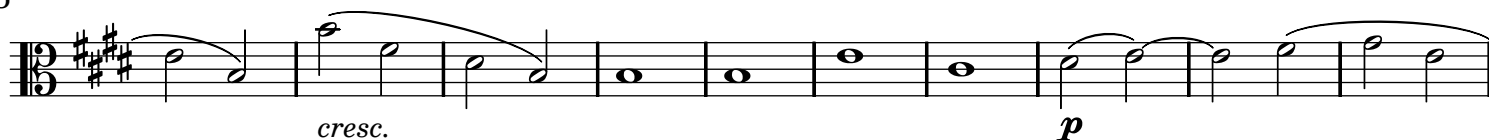
poco rit. in tempo

poco rit. in tempo

57



65



75



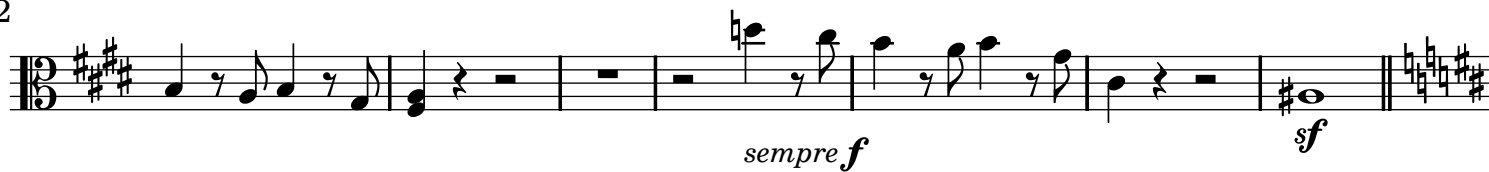
82



87



92



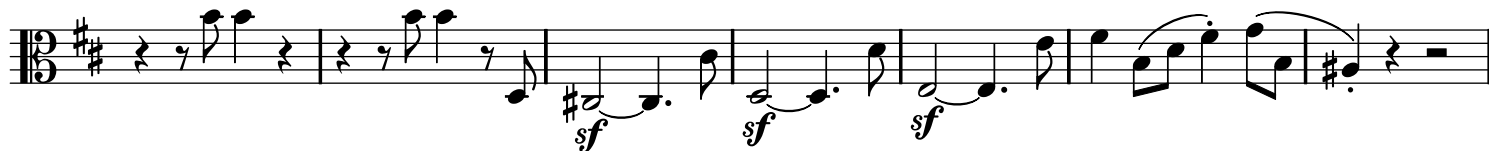
99



106



112



119



125



131



137



142

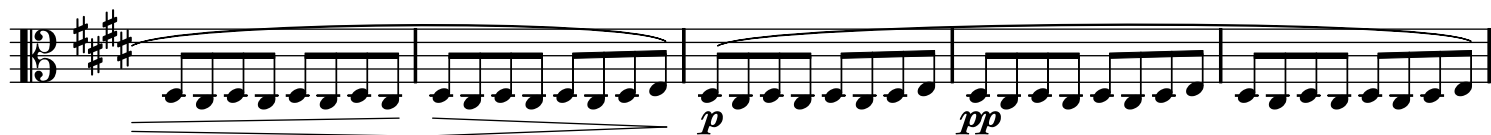


Ritmo di tre battute

147



152



157



162



168



174



181



187



194



201



207



212



poco rit. in tempo

poco rit.

in tempo

218



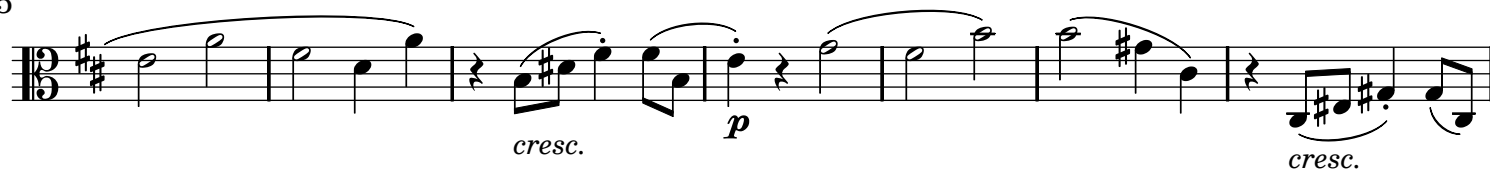
poco rit. in  
tempo riten.

in tempo

226



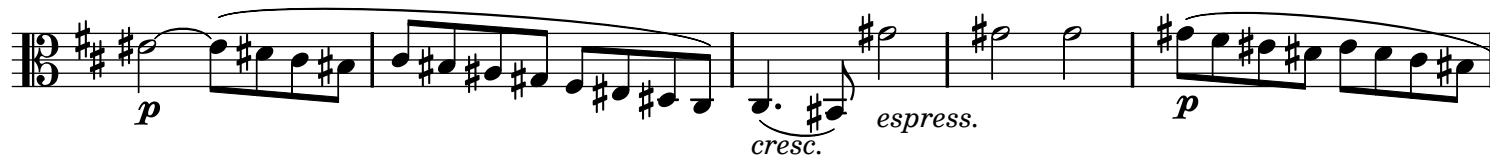
235



poco rit.

in tempo

242



poco rit. in  
tempo riten.

247



in tempo

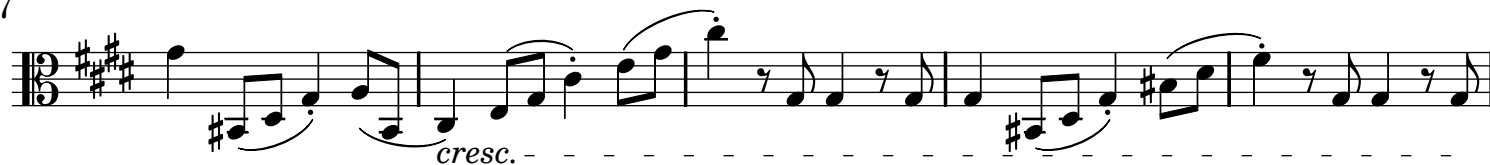
254



262



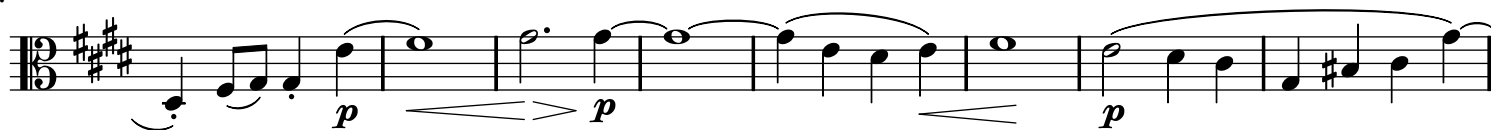
267



272



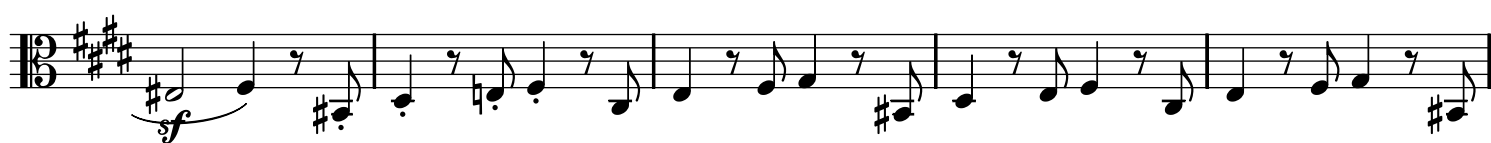
277



285



292



297



302



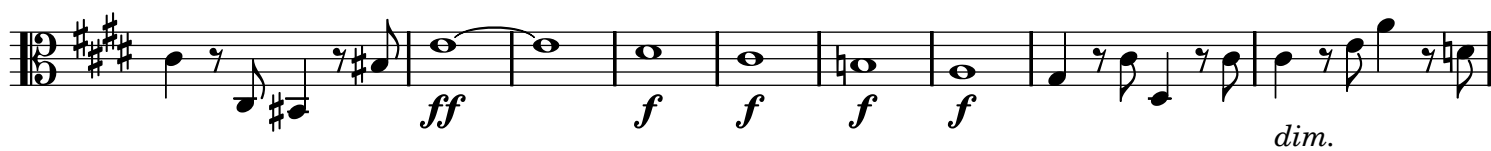
308



314



320



329

non legato





334



340



345

Ritmo di due battute



351



359



368



Poco Adagio.

375



Tempo I.

382

