

Partita II

Clavierübung part I

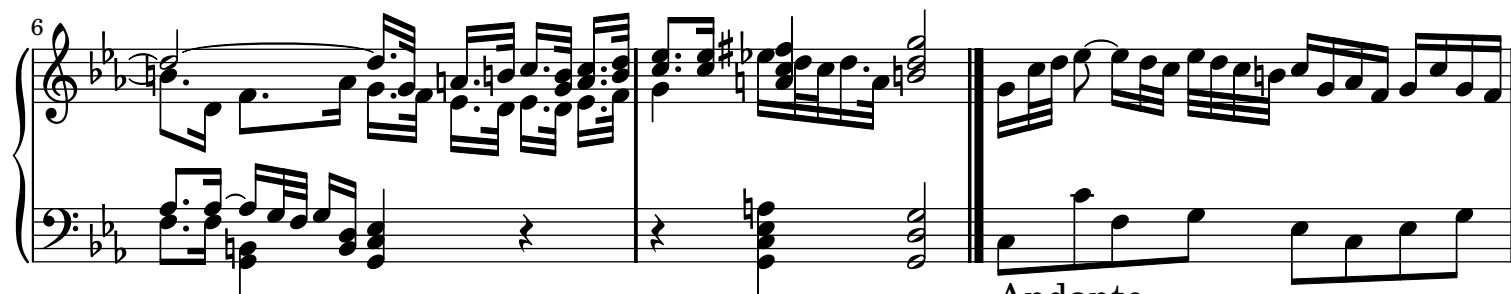
J. S. Bach

BWV 826

1. Sinfonia



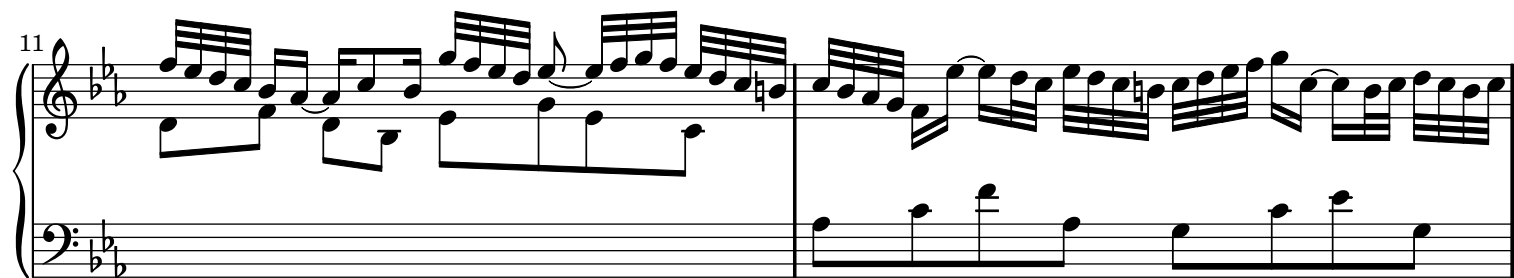
Grave Adagio



Andante

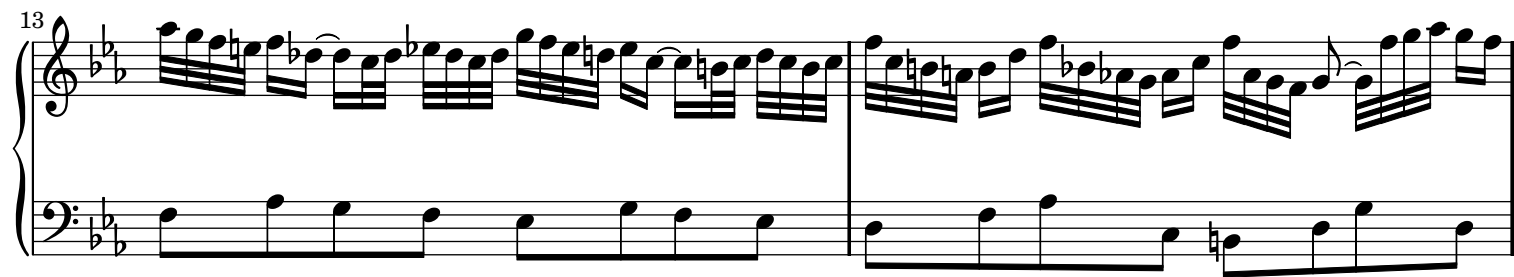


11



System 11: Treble and bass staves in B-flat major. The treble staff features a complex melody with many sixteenth and thirty-second notes, including triplets. The bass staff provides a simple accompaniment of quarter notes.

13



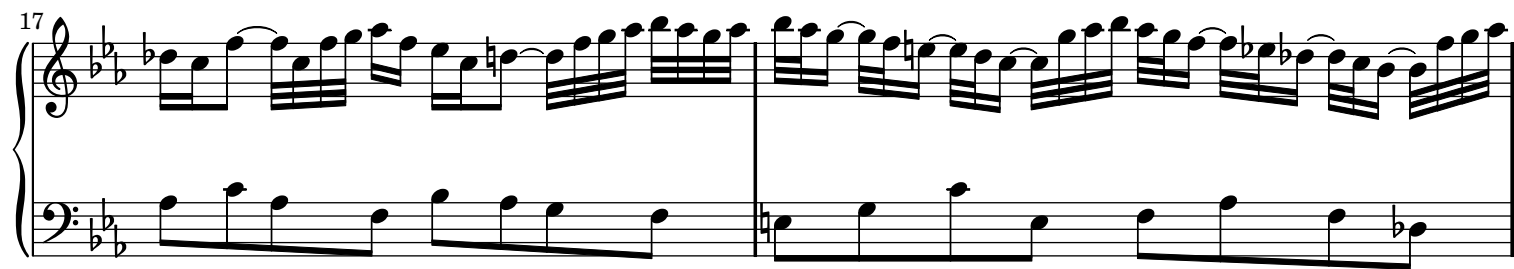
System 13: Treble and bass staves in B-flat major. The treble staff continues with a fast, intricate melody. The bass staff consists of quarter notes.

15



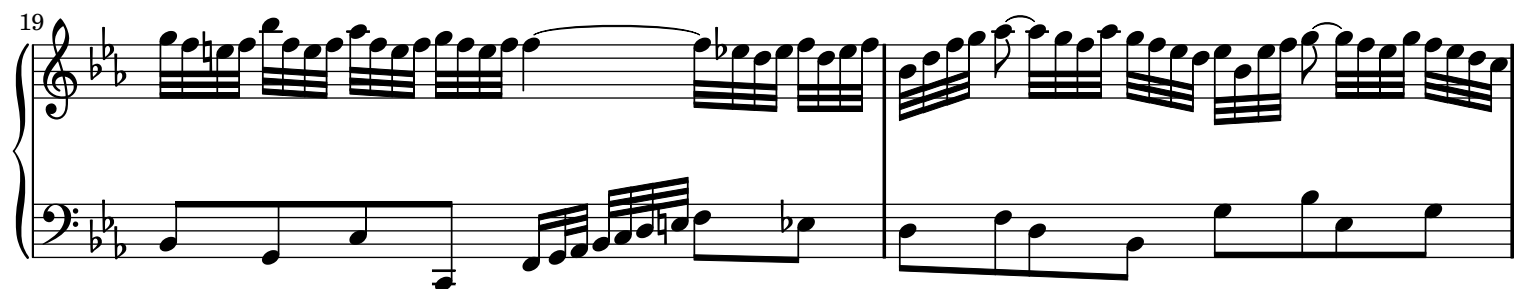
System 15: Treble and bass staves in B-flat major. The treble staff has a melodic line with some rests. The bass staff features a more active accompaniment with eighth and sixteenth notes.

17



System 17: Treble and bass staves in B-flat major. The treble staff contains a dense, fast-moving melodic passage. The bass staff continues with a steady quarter-note accompaniment.

19



System 19: Treble and bass staves in B-flat major. The treble staff shows a melodic line with some slurs. The bass staff has a simple accompaniment of quarter notes.

21

Measures 21-22 of a piano piece in B-flat major. Measure 21 features a complex right-hand melody with many beamed sixteenth notes and a simple left-hand accompaniment. Measure 22 continues the right-hand melody with a trill on the second measure.

23

Measures 23-24. Measure 23 continues the right-hand melody with a trill. Measure 24 features a more active left-hand accompaniment with beamed eighth notes.

25

Measures 25-26. Measure 25 continues the right-hand melody. Measure 26 features a trill on the right hand and a more active left-hand accompaniment.

27

Measures 27-28. Measure 27 continues the right-hand melody. Measure 28 features a trill on the right hand and a simple left-hand accompaniment.

29

Measures 29-31. Measure 29 continues the right-hand melody. Measure 30 features a trill on the right hand. Measure 31 features a 3/4 time signature change and a simple left-hand accompaniment.

32

Measures 32-35. Measure 32 continues the right-hand melody. Measure 33 features a trill on the right hand. Measure 34 features a 3/4 time signature change and a simple left-hand accompaniment. Measure 35 continues the right-hand melody.

36

Measures 36-39. Treble and bass staves. Treble staff contains eighth-note patterns with slurs. Bass staff contains a steady eighth-note accompaniment.

40

Measures 40-42. Treble and bass staves. Treble staff contains eighth-note patterns with slurs. Bass staff contains a steady eighth-note accompaniment.

43

Measures 43-45. Treble and bass staves. Treble staff contains eighth-note patterns with slurs. Bass staff contains a steady eighth-note accompaniment.

46

Measures 46-48. Treble and bass staves. Treble staff contains eighth-note patterns with slurs. Bass staff contains a steady eighth-note accompaniment.

49

Measures 49-51. Treble and bass staves. Treble staff contains eighth-note patterns with slurs. Bass staff contains a steady eighth-note accompaniment.

52

Measures 52-54. Treble and bass staves. Treble staff contains eighth-note patterns with slurs. Bass staff contains a steady eighth-note accompaniment.

55

Measures 55-57 of a piano piece in B-flat major. The right hand features a continuous eighth-note melody, while the left hand provides a steady eighth-note accompaniment. Measure 57 includes a key signature change to C major, indicated by a natural sign over the F.

58

Measures 58-60 of the piano piece. The right hand continues with eighth-note patterns, and the left hand maintains its accompaniment. Measure 60 features a key signature change back to B-flat major, indicated by a flat sign over the F.

61

Measures 61-63 of the piano piece. The right hand plays a simple eighth-note melody, and the left hand continues with eighth-note accompaniment. Measure 63 includes a key signature change to C major, indicated by a natural sign over the F.

64

Measures 64-66 of the piano piece. The right hand features a more complex eighth-note melody, and the left hand continues with eighth-note accompaniment. Measure 66 includes a key signature change back to B-flat major, indicated by a flat sign over the F.

67

Measures 67-69 of the piano piece. The right hand continues with eighth-note patterns, and the left hand maintains its accompaniment. Measure 69 includes a key signature change to C major, indicated by a natural sign over the F.

70

Measures 70-72 of the piano piece. The right hand features a more complex eighth-note melody, and the left hand continues with eighth-note accompaniment. Measure 72 includes a key signature change back to B-flat major, indicated by a flat sign over the F.

73

Measures 73-75 of a musical score in B-flat major (two flats). The piece is in 3/4 time. Measures 73 and 74 feature a continuous eighth-note accompaniment in the bass and a melody in the treble. Measure 75 shows a change in the bass line, with a half-note chord (F2, Bb1) and a half-note melody (Bb2) in the treble.

76

Measures 76-78. Measure 76 continues the eighth-note accompaniment. Measure 77 features a treble melody with a trill on G4. Measure 78 shows a change in the bass line, with a half-note chord (F2, Bb1) and a half-note melody (Bb2) in the treble.

79

Measures 79-81. Measures 79 and 80 continue the eighth-note accompaniment. Measure 81 features a treble melody with a trill on G4.

82

Measures 82-84. Measures 82 and 83 continue the eighth-note accompaniment. Measure 84 features a treble melody with a trill on G4.

85

Measures 85-87. Measures 85 and 86 continue the eighth-note accompaniment. Measure 87 features a treble melody with a trill on G4.

88

Measures 88-90. Measures 88 and 89 continue the eighth-note accompaniment. Measure 90 features a treble melody with a trill on G4.

2. Allemande

BWV 826

The image displays the musical score for the second Allemande from the Notebook for Anna Bach, BWV 826. The score is written in B-flat major (two flats) and 3/4 time. It consists of 11 measures, organized into five systems, each with a treble and bass staff. The first system (measures 1-2) shows the initial entry of the melody in the treble and a supporting bass line. The second system (measures 3-4) continues the melodic development with a triplet in measure 3. The third system (measures 5-6) features a sequence of eighth notes in the treble. The fourth system (measures 7-8) includes a key signature change to C major (no sharps or flats) in measure 7. The fifth system (measures 9-11) concludes the piece with a final cadence in C major, marked by a sharp sign at the end of the bass staff.

12

Measures 12-13 of a musical score in B-flat major (two flats). Measure 12 features a treble staff with a continuous eighth-note melody and a bass staff with a more complex, syncopated eighth-note pattern. Measure 13 continues the treble melody with some ties and a half-note in the bass. The system concludes with a double bar line.

14

Measures 14-15. Measure 14 shows a treble staff with a steady eighth-note flow and a bass staff with a simple eighth-note accompaniment. Measure 15 features a treble staff with a half-note and a quarter-note, and a bass staff with a half-note and a quarter-note. The system ends with a double bar line.

16

Measures 16-17. Measure 16 includes a treble staff with a half-note, a quarter-note, and a half-note, and a bass staff with a half-note and a quarter-note. A repeat sign is present in both staves. Measure 17 continues with a treble staff featuring a half-note and a quarter-note, and a bass staff with a half-note and a quarter-note. The system ends with a double bar line.

18

Measures 18-19. Measure 18 has a treble staff with a half-note, a quarter-note, and a half-note, and a bass staff with a half-note and a quarter-note. Measure 19 features a treble staff with a half-note and a quarter-note, and a bass staff with a half-note and a quarter-note. The system ends with a double bar line.

20

Measures 20-21. Measure 20 includes a treble staff with a half-note, a quarter-note, and a half-note, and a bass staff with a half-note and a quarter-note. Measure 21 features a treble staff with a half-note and a quarter-note, and a bass staff with a half-note and a quarter-note. The system ends with a double bar line.

22

24

26

28

30

Sheet music from www.MutopiaProject.org • Free to download, with the freedom to distribute, modify and perform.

Typeset using www.LilyPond.org by Carl Bolstad. Reference: Mutopia-2006/08/21-602

This sheet music has been placed in the public domain by the typesetter, for details see: <http://creativecommons.org/licenses/publicdomain>