

Method for the Cornet. First Studies

Trumpet

Jean-Baptiste Arban

1

tu tu

0 0 0 0 1/2 1 1

10

1/2 1/2 0 0 2 0 0 0

2

tu tu

0 1/2 2 0 1/2 2 0 1

9

tu tu

1 0 2 1/2 0 2 1/2 0

3

tu tu tu

1/2 1 1/2 1 0 1 0 1/2 0 1/2 2 1/2 1 0 1 0 1/2

12

0 1/2 2 1/2 2 0 2 0 1/2 0 1/2 2 1/2 2 0 2 0 1 0

4

tu tu tu

0 1 0 1 0 1 0 1 0 2 0 2 1 0 1 0 1

12

0 2 0 2 1/2 2 1/2 0 1 0 2 0 2 0 1/2 0 0 1 0

5

tu tu tu

1/2 0 1/2 1 1/2 1 0 2 0 1/2 0 1/2 2 1 2 0 0

12

0 0 0 0 2 1 2 1/2 0 1/2 0 2 0 1 1/2 1 1/2 0 1/2

6

tu tu tu tu tu tu tu

0 2 0 1 0 2 1/2 1 1/2 1 0 1 0 2 0 #2 0 1/2 2 0

Trumpet

2

Musical staff with notes and fingerings: 1 0 0 1 0 2 1 2 3 2 3 2 2 0 1 2 2 1 2 2 0 1 2

7

Musical staff with notes, fingerings, and "tu" lyrics. Fingerings: 0, 2

13

Musical staff with notes, fingerings, and "tu" lyrics. Fingerings: 2, 3, 1, 2

26

Musical staff with notes, fingerings, and "tu" lyrics. Includes "or 3" and fingerings: 2, 3

39

Musical staff with notes, fingerings, and "tu" lyrics. Fingerings: 2, 3, 1, 3

52

Musical staff with notes, fingerings, and "tu" lyrics. Fingerings: 1, 2, 1, 2, 0

8

Musical staff with notes, fingerings, and "tu tu" lyrics. Fingerings: 0, 2

10

Musical staff with notes, fingerings, and "tu tu" lyrics. Fingerings: 2, 1, 1, 2

20

Musical staff with notes, fingerings, and "tu tu" lyrics. Fingerings: 1, 2, 2, 3

29

Musical staff with notes, fingerings, and "tu tu" lyrics. Fingerings: 2, 3, 1, 3, 1

39

Musical staff with notes, fingerings, and "tu tu" lyrics. Fingerings: 1, 2, 1, 0

9

Musical staff with notes, fingerings, and "tu tu" lyrics. Fingerings: 0, 1, 3, 0, 1, 2, 0, 1, 0, 0, 1, 2, 0, 0, 1

Musical staff with notes and fingerings: 1, 2, 3, 2, 3, 1, 2, 2, 3, 1, 2, 3, 2, 1, 3

Trumpet

15

23

31

39

47

54

62

70

78

10

15

23

31

Trumpet

31

39

47

55

63

71

78

11

8

12

9

13

8

This image displays a trumpet musical score consisting of 18 systems of music. Each system is a single staff in treble clef with a common time signature (C). The systems are numbered 16, 14, 8, 15, 9, 16, 8, 16, 17, 8, 16, and 18. The key signature changes from one sharp (F#) to one flat (Bb) between the 9th and 10th systems. The notation includes various rhythmic values such as quarter, eighth, and sixteenth notes, as well as rests, slurs, and dynamic markings like accents (^) and breath marks (v). The score concludes with a double bar line at the end of the 18th system.

6

Trumpet

8



16



19



9



17



20



8



15



21



8



16



22



8



Trumpet

16



23



8



16



24



8



17



25



8



16



26



10



20



8

Trumpet

30



27



11



22



28



6



12



29



6



11



16



30



6



Trumpet

12



31



7



14



32



7



14



33



7



13



19



34



7



38



7



14



21



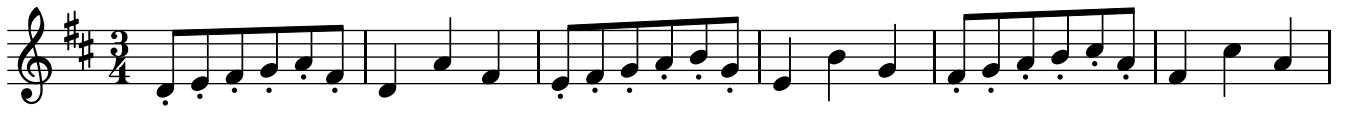
28



35



39



7



14



21



27



40



7



5

46

8

15

22

29

36

43

50

57

64

70

76

83

90

97

47

5

9

13

18

23

28

48

5

10



Sheet music for Trumpet, consisting of 15 systems of music. The score is written in treble clef and 2/4 time. The first system (measures 15-20) features a melodic line with eighth and sixteenth notes. The second system (measures 21-26) continues the melodic development. The third system (measures 27-32) shows a change in rhythm with more eighth notes. The fourth system (measures 33-38) features a melodic line with eighth notes. The fifth system (measures 39-44) is marked with a 3/4 time signature and features a melodic line with eighth notes. The sixth system (measures 45-50) continues the melodic line. The seventh system (measures 51-56) features a melodic line with eighth notes. The eighth system (measures 57-62) continues the melodic line. The ninth system (measures 63-68) features a melodic line with eighth notes. The tenth system (measures 69-74) continues the melodic line. The eleventh system (measures 75-80) features a melodic line with eighth notes. The twelfth system (measures 81-86) continues the melodic line. The thirteenth system (measures 87-92) features a melodic line with eighth notes. The fourteenth system (measures 93-98) continues the melodic line. The fifteenth system (measures 99-104) features a melodic line with eighth notes and ends with a double bar line and a fermata. The score is marked with 'D.C.' at the end of the final system.